

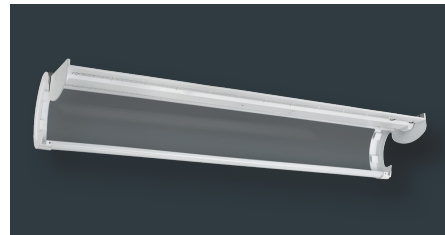
Commercial Wrap Light

The Easy to Install Wrap Light

EZ WRAP INSTALL LIGHT



48" Commercial Wrap Light
Part #: WR-4-43-840-MV-D
Order #: 56514142 39W, 4300 lm, >80 Cri



- ✓ Commercial grade white powder coat finish
- ✓ Captive, hinged lens makes overhead installations a breeze!
- ✓ Snap-in quick connect wire junctions



ETI ADVANTAGE



- ✓ Quick easy installation
- ✓ Tandem/end-to-end connect up to 10 fixtures

- ✓ Accepts 0-10V step dimming control
- ✓ High impact resistant non-yellowing polycarbonate lens

Perfect for Commercial, Industrial or Residential Application

Design

- 180°, glare free illumination!
- Hinged lens and snap-in, quick connect wiring allow for quick, easy, and safe installations!

Technology

- Integrated driver is 0-10V dimmable to 10%

Construction

- Shatter resistant polycarbonate thermoplastic lens
- Commercial grade powder coated white finish
- Temp rating -4°F - 104 °F
- Dimensions: 48 x 7.4 x 2.7"

Commercial Wrap Light

The Easy to Install Wrap Light

PART NUMBER GUIDE

CATEGORY	SIZE	WATTS	CRI/CCT	VOLTAGE	DIMMABILITY
WR	4	43	840	MV	D

PRODUCT/SKU DETAILS

GENERAL SPECIFICATIONS:

Voltage	120-277VAC	Frequency	50/60 Hz.	CRI	80
Power Factor	>.90	THD	< 20%	Rating	cULus Damp
Temperature	-4°F to +113°F	Rated Life	50,000 hrs.	Warranty	5 Year Limited

ORDERING GUIDE

Part #	Model #	Description	LED Watts	Lumens	LPW	CCT	Replaces	Product Dim.	CRI	Input Voltage	Case Pack
WR-4-43-840-MV-D	56514142	4' Commercial Wrap Light - 0-10V Dimmable	3 x 32w T8	39w	4,300	110	4000K	48 x 7.4 x 2.7 in.	80	120-277V	2

PACKAGING SPECIFICATIONS

Part #	Model #	UPC	UCC	Inner Carton Dimensions	Inner Carton Weight	Shipper/Master Carton Dimensions	Shipper/Master Carton Weight
WR-4-43-840-MV-D	56514142	849489060897	50849489060892	50.4 x 10 x 5.6 in.	9.6 lbs.	51 x 12 x 10.7 in.	20.8 lbs.