

Linear High Bay

EZ Install Linear High Bay 92w, 138w, & 180w



EZ High Bay INSTALL

92w 12,000 Lm. Replaces 250-400w HID	138w 18,000 Lm. Replaces 400w HID	180w 24,000 Lm. Replaces >400w HID
---	--------------------------------------	---------------------------------------

ETI ADVANTAGE



- ✓ Complete linear LED High Bay solution replacing 250w-1000w HID
- ✓ EZ Install by suspension, pendant, or surface mount – Brackets included!
- ✓ Pendant/Flush mount Bracket enables wiring without physically supporting fixture!
- ✓ Tandem brackets available for longer linear configurations

- ✓ DLC Premium 130 LPW
- ✓ EZ to install lightweight design allows for “2 handed” electrical connections
- ✓ Shatter resistant PC lens built with low glare diffuser to reduce risk of forklift injuries

LIGHTING CONTROL AND SAFETY



70114401 40w Emergency LED Driver/BBU

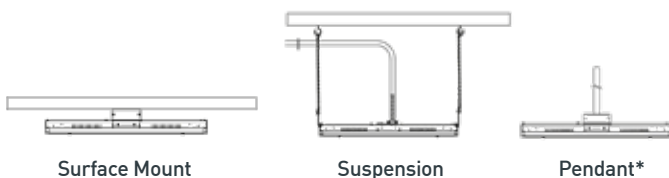


70114402 40w Emergency LED Driver/BBU

MOUNTING OPTIONS

3-Way EZ Installation!

*Down rod not included



Included Mounting Hardware:



Features & Specifications

- Wide 100° beam angle • 120-277V • >80CRI • 0-10V Dimmable • Temp rating -30°F - 130°F
- Projected L70>200,000 hours @ 25C per IES TM-21 • 5 Year limited warranty

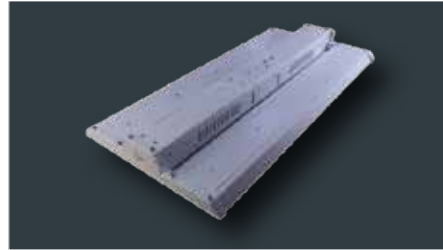
Linear High Bay

Project:

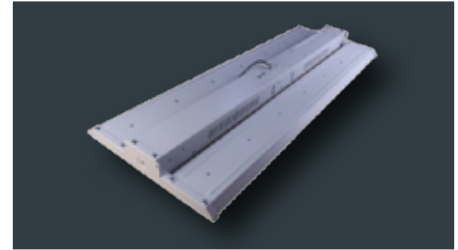
Part Number:



92w 12,000 Lm. 50240161 24" x 12.6"
Replaces 250w-400w HID



138w 18,000 Lm. 50240261 24" x 12.6"
Replaces 400w HID



180w 24,000 Lm. 50241161 33" x 12.6"
Replaces >400w HID

PART NUMBER GUIDE

CATEGORY	SIZE	LUMENS	CRI	CCT	VOLTAGE	DIMMING	BBU	MOTION SENSOR
HBL			8	50K	MV	LVD		

PRODUCT/SKU DETAILS

GENERAL SPECIFICATIONS:

Voltage	120-277VAC	Frequency	50/60 Hz.	CRI	80
Power Factor	>.90	THD	< 20%	Rating	ETL Damp
Temperature	-30°F to +130°F	Rated Life	200,000 hrs.	Warranty	5 Year Limited

ORDERING GUIDE

Part #	Model #	Description	Replaces	LED Watts	Lumens	LPW	CCT	CRI	Input Voltage	Product Dim.	Product Weight	Case Pack
HBL-2FT-12000LM-80-50K-MV-LVD	50240161	2' Value Series Linear High Bay, 92w, 5000K, DLC	250-400w HID	92	12000	130	5000K	80	120-277V	24 x 12.6 x 2.1 in.	7.0 lbs.	1
HBL-2FT-18000LM-8-50K-MV-LVD	50240261	2' Value Series Linear High Bay, 138w, 5000K, DLC	400w HID	138	18000	130	5000K	80	120-277V	24 x 12.6 x 2.1 in.	7.3 lbs.	1
HBL-2.75FT-24000LM-8-50K-MV-LVD	50241161	2.5' Value Series Linear High Bay, 185w, 5000K, DLC	400w HID	185	24000	130	5000K	80	120-277V	33 x 12.6 x 2.1 in.	9.5 lbs.	1

Accessories

EMUFO-40170-YY	70114401	Emergency LED Driver/BBU, Hanging/Round - Compatible with 54283144, 54573161, 54583361	N/A	40w	N/A	N/A	N/A	N/A	100-347V	11 x 3.5 x 6.5 in.	N/A	4
EMU-40FY-170	70114402	Emergency LED Driver/BBU - Compatible with 54283144, 54573161, 54583361	N/A	40w	N/A	N/A	N/A	N/A	100-347V	12.4 x 2.3 x 1.5 in.	N/A	10

PACKAGING SPECIFICATIONS

Part #	Model #	UPC	UCC	Inner Carton Dimensions	Inner Carton Weight	Shipper/Master Carton Dimensions	Shipper/Master Carton Weight	Shipper Carton Pack
HBL-2FT-12000LM-8-50K-MV-LVD	50240161	849489063133	50849489063138	26.8 x 15.4 x 4.1 in.	8.5 lbs.	26.8 x 15.4 x 4.1 in.	8.5 lbs.	1
HBL-2FT-18000LM-8-50K-MV-LVD	50240261	849489063140	50849489063145	26.8 x 15.4 x 4.1 in.	8.8 lbs.	26.8 x 15.4 x 4.1 in.	8.8 lbs.	1
HBL-2.75FT-24000LM-8-50K-MV-LVD	50241161	849489063157	50849489063152	35.8 x 15.4 x 4.1 in.	11.6 lbs.	35.8 x 15.4 x 4.1 in.	11.6 lbs.	1

BUILD-TO-FIT PROGRAM

- ✓ Pre-installed/wired motion sensors and/or BBU
- ✓ Built-to-order & pre-tested
- ✓ 2 week lead time



With 70114402

With 70201101 Motion Sensor Emergency LED Driver (BBU) With Motion Sensor & BBU

Base Model Description	Part #	Model #	Base Model Description	Part #	Model #	Base Model Description	Part #	Model #
2' Linear High Bay, 92w	HBL-2FT-12000LM-8-50K-M-LVD-OS	50240161-I	2' Linear High Bay, 92w	HBL-2FT-12000LM-8-50K-M-LVD-EM	50240161-EM	2' Linear High Bay, 92w	HBL-2FT-12000LM-8-50K-M-LVD-EM-OS	50240161-I-EM
2' Linear High Bay, 138w	HBL-2FT-18000LM-8-50K-M-LVD-OS	50240261-I	2' Linear High Bay, 138w	HBL-2FT-18000LM-8-50K-M-LVD-EM	50240261-EM	2' Linear High Bay, 138w	HBL-2FT-18000LM-8-50K-M-LVD-EM-OS	50240261-I-EM
2.5' Linear High Bay, 185w	HBL-2.75FT-24000LM-8-50K-M-LVD-OS	50241161-I	2.5' Linear High Bay, 185w	HBL-2.75FT-24000LM-8-50K-M-LVD-EM	50241161-EM	2.5' Linear High Bay, 185w	HBL-2.75FT-24000LM-8-50K-M-LVD-EM-OS	50241161-I-EM