

2021



RESIDENTIAL
BUILDERS AND
CONTRACTORS

LED

INDOOR/OUTDOOR LIGHTING CATALOG

ENERGY SAVING SOLUTIONS

FOR INTERIOR AND EXTERIOR SPACES



TABLE OF CONTENTS

COMMERCIAL/RESIDENTIAL INDOOR FIXTURES

| | |
|---|----|
| SMD6 Surface Mount Disk Lights | 6 |
| Recessed Downlights | 7 |
| Flushmounts-LowPro Disc & Decorative | 10 |
| Flushmounts with Color Preference® & NightLightR..... | 12 |
| Flushmounts- with Color Preference® & Fixed CCT..... | 13 |
| Spin Lights®..... | 14 |
| Under Cabinet Lights..... | 15 |
| Strip Lights..... | 16 |
| Wrap Lights | 18 |
| Ceiling Lights & Shop/Task Lights | 23 |
| Flat Panels | 24 |

OUTDOOR LIGHTING FIXTURES

| | |
|---------------------------|----|
| Security Lights | 26 |
| Outdoor Flushmounts | 26 |

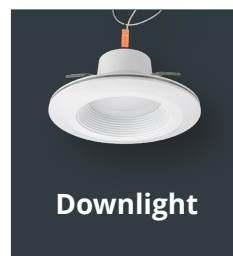
HORTICULTURE LIGHTING FIXTURES

| | |
|------------------|----|
| Grow Elite | 27 |
|------------------|----|

ACCESSORIES

| | |
|------------------------|----|
| OC Sensors & BBUs..... | 28 |
|------------------------|----|

RESIDENTIAL & COMMERCIAL:



Downlight



Flushmount



Wrap Lights



Strip Lights

To Order:

Call ETi SSL Customer Service
8 a.m. - 5 p.m., CST, Monday - Friday
1-855-ETI-SSL (1-855-384-7754)
www.ETiSSL.com



ETi SSL is a NVC Company

ETi Solid State Lighting, Inc. – A Unique Approach. Extraordinary Results.

Our manufacturing capabilities, end-user-driven collaborative product development capability, and global management team have established ETi Solid State Lighting as a leading LED lighting brand as well as one of the largest private-label manufacturers of LED lighting products to the North America market.



Our new North American corporate headquarters and 190,000 sq ft distribution center is located just outside of Chicago in Wheeling, Illinois.

ETi is a Subsidiary of NVC International

Global Operation

NVC International's operation spans 29 countries with five regional sales offices across the USA, Europe, Asia, and the Middle East. As a 100% vertically integrated global supplier of LED components, lamps, and luminaires, we sell to many of the largest lighting brands and retailers in the world.

Manufacturing

NVC International, ETi's parent company, is the largest lighting manufacturer in China with over 6 million sq. ft. of manufacturing space and 10,000 employees. Our expanded manufacturing footprint in Vietnam will allow ETi to continue to offer our customers innovative, high-quality LED lighting products at a competitive price.

Quality & Innovation

100% of our state-of-the-art, patented products feature high-quality Samsung LEDs. Our robust product development organization features four R&D centers and over 90 mechanical and electrical engineers.

Global Partnerships

NVC International and Samsung are proud to be strategic LED partners. All of our lighting products feature Samsung's high-quality LEDs.



ETi and NVC International to Expand Production in Vietnam!

In 2019 ETi opened the first large-scale lighting factory in Vietnam's new Yen Phong economic zone, featuring 120,000 sq ft of manufacturing space to produce ETi's High Bay, Strip, Wrap, and Flush Mount fixtures.

A second factory in Yen Phong is now under construction with plans to open in late 2021.

These two state-of-the-art factories will benefit from a much lower duty rate, a vertically integrated supply chain, and easy access to multiple deep-water ports and international airports.



OUR CORE VALUES:

Quality: Superior product design, uncompromising components and material.

Innovation: New lighting technologies that improve quality of life and install quickly and easily.

Value: We deliver quality and innovation at a great price.



ETi's Color Preference® patented technology provides multiple CCT choices in one fixture. Colors range from 2700K to 5000K depending on the product. Simply move the switch on the back of the ETi fixture to obtain the desired ambiance for any room.

U.S. Patents - 10,091,855, 10,462,871, 10,492,262



Like our Color Preference® technology, Lumen Boost™ allows users to select the best light output for their lighting area. Easily adjustable intensity meets the needs of different room sizes, adjust for user preferences, and activities.



All of our NightLightR™ models feature an integrated 2000K CCT night light hidden in the base of each light fixture. The light fixture can be switched from white light to night light using the rooms light switch. The warm 2000K indirect light creates a comforting glow at night.

U.S. Patent Pending



The LowPro™ line of LED downlights is unmatched in the marketplace at a slim 1.3" profile. LowPro™ downlights are designed for difficult low clearance installations. These lights can be installed in ceiling locations that traditional downlights do not fit. Mounting guide plate accessories are now available for new construction/remodel projects.



SnapFit™ Mounting System is an innovative way to quickly install a luminaire. Simply secure the SnapFit™ bracket that is included with the ETi fixture to a j-box and quickly snap the fixture into the bracket without tools.



TwisFit™ Mounting System is an innovative way to quickly install a luminaire. Simply secure the TwistFit™ bracket that is included with the ETi fixture to a j-box and quickly snap the fixture into the bracket without tools.



ETi is always developing innovative ways to install lighting fixtures to enhance the customer's experience. From wrap lights with hinged lens covers to screwing in fixtures with ETi's patented SpinLight® collection. ETi continues to develop technology that makes wiring fixtures a breeze.

U.S. Patent # 9500352, 9541270, D776326, CND Patent # 169113

ETi[®] TOTAL LIGHTING SOLUTIONS

Custom Project Lighting Specialists

For special, custom, and large-scale lighting projects, ETi is your Total Lighting Solution.

Our Total Lighting Solutions (TLS) Team consists of Product Development Professionals, Project Managers, Engineers, and Sourcing Managers, as well as our North American Sales Team. First, we work directly with customers to define lighting project requirements. From there, the TLS team will match those requirements to existing ETi products, Fast Track products, or utilize our XPD Program to design a custom product that meets exact project specifications. Depending on the scope of the project, all three programs could be utilized.

Stock Products: Over 300 models in stock, ready to ship.

Fast Track: Over 1,000 products from our international product assortment, 10 to 12-week lead time.

XPD Fully Custom Product: Up to 20-week lead time.

TYPICAL PROJECT TIMELINE



ETi PRODUCT RESOURCES



Total Lighting Solutions
Volume 1
Residential and
Multi-Family Housing



Total Lighting Solutions
Volume 2
Municipalities, Schools
& Universities



Total Lighting Solutions
Volume 3
Parking Garages



Total Lighting Solutions
Volume 4
Retail Spaces

SMD6 SURFACE MOUNT DISK LIGHTS



TwistFit Mounting System

Compatible with 3-4" square/octagonal j-box



TwistFit
Mounting
Bracket

Quickly Twist the Fixture into Place!



ETi Advantage

- ✓ Innovative TwistFit j-box mounting system makes installation easy & ensures a tight, no-gap fit against the ceiling
- ✓ Can also retrofit into a 5"/6" recessed can with optional accessory kit
- ✓ No need to remove lens to install, extremely dirt & insect resistant
- ✓ Optional color trim kits available: black, oil rubbed bronze, & brushed nickel
- ✓ UL wet location rated
- ✓ TRIAC Dimmable

3000K Fixed CCT



Model # 56578111
Part #

FMDL-7.5IN-1000LM-8-30K-SV-TD
14W 1000LM 120V

Model # 56578411
Part #

FMDL-7.5IN-1500LM-8-30K-SV-TD
20W 1500LM 120V



3000K/4000K/5000K



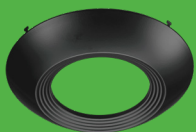
Model # 56578211
Part #

FMDL-7.5IN-1000LM-8-CP3-SV-TD
14W 1000LM 120V

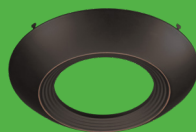
Model # 56578311
Part #

FMDL-7.5IN-1500LM-8-CP3-SV-TD
20W 1500LM 120V

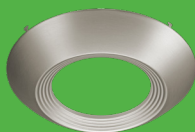
Available Accessories (purchased separately)



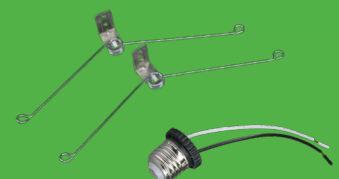
Model # 90600754



Model # 90600755



Model # 90600756



5"/6" Recessed Can Install Kit
Model # 95657811101

RECESSED DOWNLIGHTS

LowPro™ CANLESS DIRECT MOUNT



ETi Advantage

- ✓ Canless direct ceiling mount design
- ✓ Needs only 1.3" clearance for installation
- ✓ 5-CCT 90+ CRI ColorPreference is standard
- ✓ Optional designer color trim kits available
- ✓ JA8 certified & can be used to comply w/ T24
- ✓ Robust metal remote driver box design
- ✓ UL wet location & IC rated
- ✓ TRIAC Dimmable



Wet Location Rated!



3" LowPro Recessed Downlight

Model # 53840101

Part # DLLP-3IN-550LM-9-5CP-SV-TD

10W 550LM 120V

4" LowPro Recessed Downlight

Model # 53808103

Part # DLLP-4IN-650LM-9-5CP-SV-TD

11W 650LM 120V

6" LowPro Recessed Downlight

Model # 53807103

Part # DLLP-6IN-900LM-9-5CP-SV-TD

15W 900LM 120V



2700K



3000K



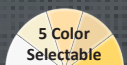
3500K



4000K



5000K



COLOR PREFERENCE®

Patented COLOR PREFERENCE® field selectable color temperature system and driver helps to provide added design flexibility and simplified SKU reduction and complexity.

An integrated switch on the remote driver box toggles between 2700K, 3000K, 3500K, 4000K and 5000K. (set to 2700K standard from the factory)



3" Guide Plates
Model # 70306101
Compatible with 3" LowPros

4" Guide Plates
Model # 70307101
Compatible with 4" LowPros

5" Guide Plates
Model # 70308101
Compatible with 5" LowPros

6" Guide Plates
Model # 70313101
Compatible with 6" LowPros

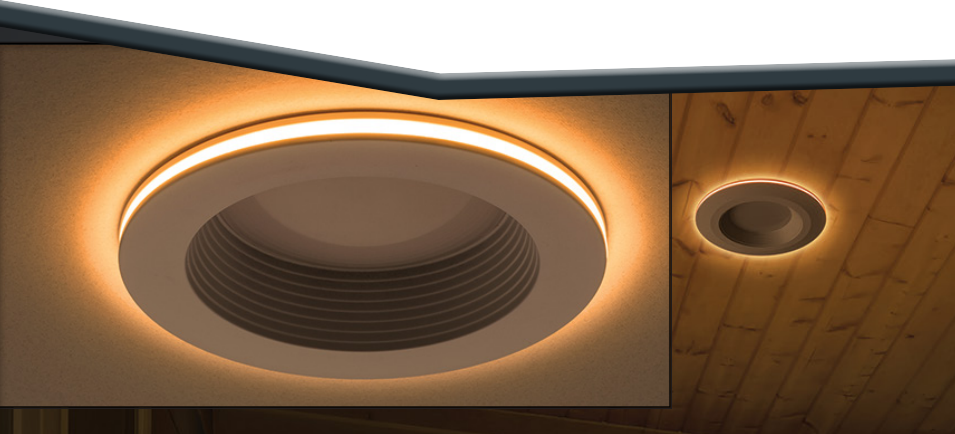
Legacy 5" Available With 4CCT COLOR PREFERENCE®



5"
Model # 53807211
Part # DL-5-90-906-SV-D
15W 900LM 120V

2700K, 3000K, 4000K, 5000K

RECESSED DOWNLIGHTS



Retrofit Existing Cans

5 Color
Selectable

**COLOR
PREFERENCE®**



No Extra Wiring Needed!

4" Color Preference®
Downlight with Night Light Trim
Model # 53805102
Part # DL-4-625-907-SV-D
10.5W 625LM 120V



6" Color Preference®
Downlight with Night Light Trim
Model # 53804102
Part # DL-6-67-907-SV-D
11W 670LM 120V



NightLIGHTR

Integrated 2000K Night Light trim delivers warm accent lighting to kitchens, bedroom, family rooms, and media rooms.

2 lights in 1: Warm accent lighting and Energy efficient Area lighting all in one!

ETi Advantage

- ✓ TRIAC Dimmable
- ✓ Direct insulation contact IC rated
- ✓ UL wet rating
- ✓ No remote control needed, activated by wall switch
- ✓ Patented Color Preference® Technology 2700K, 3000K, 3500K, 4000K, or 5000K CCT



White Light Mode

Accent/Night Light Mode

Flip wall
switch
On/Off/On
under 3
seconds to
change mode



ON



OFF



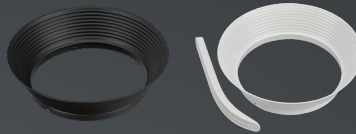
ON



30-in-1 Downlight with Color Preference® & Selectable Lumens

- 3 Level Lumen Adjust
- 5 x CCT Selectable
- 2 Trim Color Choices

LUMEN BOOST



4"

Model # 53802102
Part # DL-4-10-907-SV-D
15W 600/800/1000LM 120V



6"

Model # 53801102
Part # DL-6-11-907-SV-D
17W 700/900/1100LM 120V

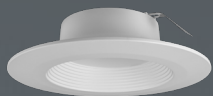
ETi Advantage

- ✓ TRIAC Dimmable
- ✓ 2 Baffle Rings included
- ✓ Wet Rated
- ✓ 2700K, 3000K, 3500K, 4000K, or 5000K CCT

COLOR PREFERENCE® RETROFIT KITS

- TRIAC Dimmable
- 120V
- 90CRI

2700K/3000K/4000K CCT



4" Downlight
Model # 53185142
Part # DL-4-10-901-SV-D
10W 625LM 120V

5 5/8" Downlight
Model # 53186401
Part # DL-6-80-901-SV-D
11W 800LM 120V

3000K/4000K/5000K CCT

4" Downlight
Model # 53185143
Part # DL-4-10-902-SV-D
10W 625LM 120V

5 5/8" Downlight
Model # 53186311
Part # DL-6-80-902-SV-D
11W 800LM 120V

Model # 53186311 & 53186401 do not include torsion springs - accessory kit sold separately
E26 adapter still included

COLOR PREFERENCE® DOWNLIGHTS FOR NEW CONSTRUCTION/REMODEL PROJECTS

120-277V 3000K/3500K/4000K/5000K



5 5/8" Color Preference®
Downlight 0-10V Dimmable
Model # 53192211
Part # DL-6-80-903-MV-D
14W 800LM 120-277V



8"/10" Color Preference®
Downlight 0-10V Dimmable
Model # 53189111
Part # DL-8-30-903-MV-D
40W 3000LM 120-277V

SINGLE CCT RETROFIT KITS



2700K CCT
4" AC Power
Recessed Downlight
Model # 53182201
Part # DL-4-625-827-SV-D
8W 625LM 120V

3000K CCT
4" AC Power
Recessed Downlight
Model # 53182211
Part # DL-4-625-830-SV-D
8W 625LM 120V



2700K CCT
5 5/8" AC Power
Recessed Downlight
Model # 53193101
Part # DL-6-67-827-SV-D
9W 670LM 120V

3000K CCT
5 5/8" AC Power
Recessed Downlight
Model # 53193111
Part # DL-6-67-830-SV-D
9W 670LM 120V

4000K CCT
5 5/8" AC Power
Recessed Downlight
Model # 53193141
Part # DL-6-67-840-SV-D
9W 670LM 120V

DOWNLIGHT ACCESSORIES

FULL ACCESSORY LIST AVAILABLE AT ETISSL.COM

| Model # | Description | Compatible Model # |
|------------------------|--|--|
| BBU Model | | |
| 70101101 | Universal wattage BBU for non-isolated driver | 53185143, 53185142, 53186401, 53186311, 53192211, 53189111 |
| 70101102 | Universal wattage BBU for isolated driver | 53809111, 53808211, 53807211 |
| Extension Cord | | |
| 90600713 | 12' extension cord for LowPro downlights single pack | 53809111, 53808211, 53807211 |
| 90600714 | 20' extension cord for LowPro downlights single pack | 53809111, 53808211, 53807211 |
| Torsion Springs | | |
| 953186311-B01 | Torsion Spring Kit | 53186311, 53186401 |

FLUSHMOUNTS

LOWPRO™ DISC & DECORATIVE



NightLIGHTR

3 Color Selectable
COLOR PREFERENCE®

3 Easy Installation Methods

BOXLESS



SnapFit™
Mounting System



TwistFit
Mounting System



ETi Advantage

- ✓ Suitable for both new construction and remodel installations
- ✓ Premium Samsung LEDs
- ✓ TRIAC Dimmable
- ✓ 2 Lights in 1: Warm accent lighting and energy efficient area lighting all in one!

7.5" CEILING LIGHT WITH 2000K ACCENT LIGHT/NIGHT LIGHT
3000K/4000K/5000K CCT

TwistFit
Mounting System



White Finish
Model # 56568114
Part # FMNL-7.5IN-800LM-8-CP3-SV-TD-WT
12W 800LM 120V

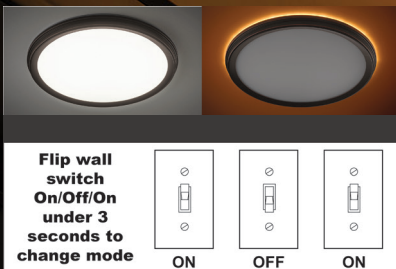


Brushed Nickel Finish
Model # 56568116
Part # FMNL-7.5IN-800LM-8-CP3-SV-TD-BN
12W 800LM 120V



Oil Rubbed Bronze Finish
Model # 56568115
Part # FMNL-7.5IN-800LM-8-CP3-SV-TD-ORB
12W 800LM 120V

WITH ACCENT LIGHT/NIGHT LIGHT



NightLIGHTR

3 Color Selectable
COLOR PREFERENCE®

ETi Advantage

- ✓ Custom trim to stylize your space
- ✓ 2000K warm accent trim
- ✓ Damp location rated
- ✓ TRIAC Dimmable

13" DECORATIVE FLUSHMOUNT WITH ACCENT LIGHT/NIGHT LIGHT

3000K/4000K/5000K CCT

TwistFit
Mounting System



White Finish

Model # 56576111

Part # FMNL-13IN-1350LM-8-CP3-SV-TD-WT

12W 1350LM 120V



Brushed Nickel Finish

Model # 56576112

Part # FMNL-13IN-1350LM-8-CP3-SV-TD-BN

12W 1350LM 120V



Oil Rubbed Bronze Finish

Model # 56576113

Part # FMNL-13IN-1350LM-8-CP3-SV-TD-ORB

12W 1350LM 120V

11" DECORATIVE FLUSHMOUNT WITH ACCENT LIGHT/NIGHT LIGHT

3000K/4000K/5000K CCT

SnapFit™
Mounting System



White Finish

Model # 56572113

Part # FMNL-11IN-900LM-8-CP3-SV-TD-WT

12W 900LM 120V



Brushed Nickel Finish

Model # 56572114

Part # FMNL-11IN-900LM-8-CP3-SV-TD-BN

12W 900LM 120V



Oil Rubbed Bronze Finish

Model # 56572115

Part # FMNL-11IN-900LM-8-CP3-SV-TD-ORB

12W 900LM 120V

ACCESSORIES AVAILABLE FOR PURCHASE



Junction Box

Model # 90600760

Compatible Model # 56568114/56568115/
56568116/56576111/56576112/56576113



E26 Adaptor with Torsion Springs Kit

Model # 95657611101

Compatible Model # 56568114/56568115/
56568116/56576111/56576112/56576113



Battery Back-up

Model # 70112202

Compatible with All
Flushmounts

FLUSHMOUNTS

WITH COLOR PREFERENCE® & NIGHTLIGHTR™



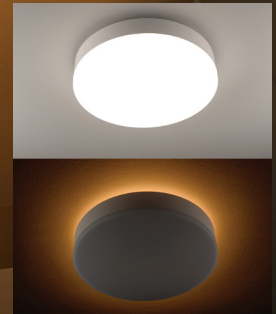
NightLIGHTR

11" & 16" Color Preference®
Flushmount with Night Light

NightLightR Accent lighting
creates a warm ambiance in
any room of your home



COLOR
PREFERENCE®



Integrated Night Light
Trim Emits Warm
2000K CCT Glow

ETi Advantage

- ✓ Integrated Warm 2000K Night Light**
- ✓ Patented 3 CCT Color Preference® Technology
- ✓ TRIAC Dimmable
- ✓ Closet Rated
- ✓ ADA Compliant
- ✓ UL Damp Rated
- ✓ Impact Resistant Non-Yellowing Lens

Technology

- Integrated 2000K night light can be turned on/off by toggling wall light switch!
- 3 CCT Color Preference® Technology delivers total choice of CCT: 3000K, 4000K, or 5000K

Control

- Dimmable with TRIAC Dimmer

Features & Specifications

- 120V
- 80CRI
- Temp rating -4°F – 113°F
- IC Rated for Direct Contact with Insulation
- Meets NECA 410.16 Requirements
- UL Damp Rated
- L70>50,000

*U.S.A. Patent 15/871,433, **Patent Pending



11" Color Preference®
LED Flushmount with Night Light

Model # 56546103

Part # FMNL-11IN-900LM-8-CP3-SV-TD

14W 900LM 120V 80CRI 3000K/4000K/5000K CCT



16" Color Preference®
LED Flushmount with Night Light

Model # 56549102

Part # FMNL-16IN-1400LM-8-CP3-SV-TD

22W 1400LM 120V 80CRI 3000K/4000K/5000K CCT

NIGHT LIGHT CAN BE
TURNED ON/OFF
BY TOGGLING WALL
LIGHT SWITCH!



White Light Mode

Accent/Night Light Mode

Flip wall
switch
On/Off/On
under 3
seconds to
change mode



ON

OFF

ON

FLUSHMOUNTS

WITH COLOR PREFERENCE® & FIXED CCT



Flushmounts with Color Preference® Technology



COLOR PREFERENCE®

Color Preference® Technology allows the installer to easily select the preferred CCT from three or more settings!

Color Preference®
2000K/2400K/3000K/3500K/4000K 120V 80CRI



13in LED Round Vintage Color
Model # 56565121
Part # FM-13IN-800LM-8-CP5-SV-B
23W 800LM

ETi Advantage

- ✓ 4 Color Preference® Models to Choose From!
- ✓ Eliminates need to order and stock multiple color temperature models for each design
- ✓ Superior Optical Performance & Electronic Design
- ✓ Proprietary light engine eliminates LED "hot spots"
- ✓ Models are 0-10V Dimming
- ✓ Robust, Durable Construction
- ✓ Durable polycarbonate globe will not yellow over time and is shatterproof
- ✓ Powder coated, heavier gauge mounting housing means long corrosion free life

Suitable for Both Dry & Damp Locations | 5 Year Warranty, L70 >50,000 Hours

Flushmount - Single CCT 2700K or 4000K



12" Low Profile Non-Dimmable
Model # 54436201
Part # FM-12-14-827-MV-N-B
14W 980LM 120-277V



16" Low Profile Non-Dimmable
Model # 54437201
Part # FM-16-22-827-MV-N-B
22W 1500LM 120-277V



12" Low Profile Non-Dimmable
Model # 54436241
Part # FM-12-14-840-MV-N-B
14W 1000LM 120-277V

Color Preference® 3000K/4000K/5000 CCT



12" Low Profile 0-10V Dimmable
Model # 54436511
Part # FM-12-16-902-MV-D-B
16W 1000LM 120-277V

16" Low Profile 0-10V Dimmable
Model # 54437511
Part # FM-16-24-902-MV-D-B
24W 1600LM 120-277V



15" Color Preference® with Bluetooth® Speaker
Model # 54620313
Part # FM-15-16-802-SV-D-BT
28W 1600LM 120V

Flushmount - Single 4000K CCT



7" Low Profile Non-Dimmable
Model # 54663142
Part # FM-7-11-840-SV-N-O
11.5W 810LM 120-277V



16" Low Profile Non-Dimmable
Model # 54437241
Part # FM-16-22-840-MV-N-B
22W 1600LM 120-277V



15" Brushed Nickel Trim TRIAC Dimmable
Model # 54620142
Part # FM-15-22-840-SV-D-C
22W 1550LM 120-277V



12" Reva Stepped Lens TRIAC Dimmable
Model # 54074343
Part # FM-12-14-840-SV-D-E
14W 1000LM 120-277V



16" Reva Stepped Lens TRIAC Dimmable
Model # 54075343
Part # FM-16-22-840-SV-D-E
22W 1640LM 120-277V



24" Reva Stepped Lens TRIAC Dimmable
Model # 54614242
Part # FM-24-40-840-SV-D-E
40W 2900LM 120-277V

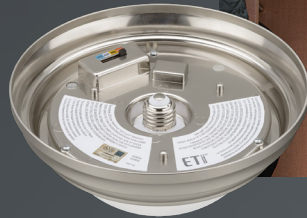
SPIN LIGHTS

ETi PATENTED TECHNOLOGY*



9" Decorative Brushed Nickel Spin Light® with Color Preference®

Color Select: 2700K/3000K/3500K/4000K/5000K CCT



Model # 56558101
Part # SLDC-9IN-810LM-8-CP5-SV-N-BN
11.5W 810LM 120V



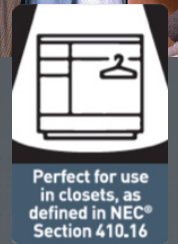
Installs in Seconds

Converts bare lamp holder into attractive LED Flushmount!



Speedmount® Accessory

Speedmount® converts your junction box into lamp holder.



SINGLE CCT 4000K

TRADITIONAL STYLE SPIN LIGHT® WITH MOTION SENSOR AVAILABLE IN 7"



7" Spin Light® with Motion Sensor
Model # 54606342
Part # SL-7-83-840-SV-N-OS
11.5W 830LM 120V

TRADITIONAL STYLE SPIN LIGHT® WITH PULL CHAIN CONTROL AVAILABLE IN 7"



7" Spin Light® - Pull Chain
Model # 54484141
Part # SLP-7-83-840-SV-N
11.5W 830LM 120V



5" Spin Light®
Model # 54692142
Part # SL-5-8-840-SV-N
8.5W 600LM 120V



11" Spin Light®
Model # 54652141
Part # SL-11-16-840-SV-N
22W 1600LM 120V



11" Spin Light® - Brushed Nickel
Model # 54652144
Part # SL-11-16-840-SV-N-BN
22W 1600LM 120V

SINGLE CCT 4000K

3 CCT 3000K, 4000K, 5000K



7" Spin Light®
Model # 54483141
Part # SL-7-83-840-SV-N
11.5W 830LM 120V



7" Color Preference® Spin Light®
Model # 54690112
Part # SL-7-81-802-SV-N
11.5W 810LM 120V

UNDER CABINET LIGHTS

ALL PURPOSE



Linkable, Beam Adjustable LED Under Cabinet Light

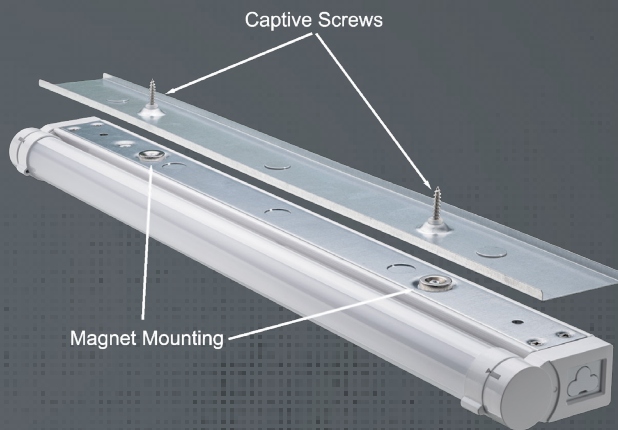
Dim2Warm™
Under Cabinet Light

Transitions from 3000K to 2200K when dimmed.



MagnaMount™ Installation

MagnaMount™ mounting plate makes cabinet installation quick and easy.



12"
Model # 53502111
Part # UC-12-5-930-SV-D
5.5W 300LM 120V

18"
Model # 53503111
Part # UC-18-9-930-SV-D
9W 500LM 120V

24"
Model # 53504111
Part # UC-24-12-930-SV-D
12.5W 700LM 120V

32"
Model # 53505111
Part # UC-32-10-930-SV-D
15W 1000LM 120V

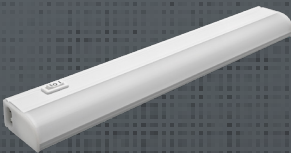
42"
Model # 53506111
Part # UC-42-15-930-SV-D
22W 1500LM 120V

Direct Wire or Plug in



LINKABLE UNDER CABINET LIGHT WITH STEP DIMMING SWITCH

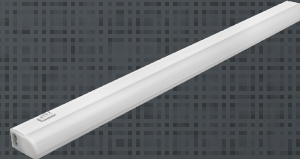
Single 3000K



12" Linkable Under Cabinet Light
Model # 54196112
Part # UC-12-6-830-SV
6W 350LM 120V



18" Linkable Under Cabinet Light
Model # 54195112
Part # UC-18-8-830-SV
8W 500LM 120V



24" Linkable Under Cabinet Light
Model # 54194112
Part # UC-24-11-830-SV
11W 700LM 120V

Single 5000K



40" Linkable Magnetic Shelf Light
Model # 535091610
Part # UC-40IN-1000LM-9-50K-SV
13W 1000LM 120V

STRIP LIGHTS

ALL PURPOSE



The Most Versatile LED Strip Light Available!

ETi Advantage

- ✓ Future Proofed! Replaceable Light Engine & Driver.
- ✓ Optional motion sensors
- ✓ Tandem and Parallel Mounting Brackets Included
- ✓ Converts to 11,000 Lumen Controllable Warehouse High Bay Fixture
- ✓ Shatterproof
- ✓ PMMA Lens will not Discolor Over Time
- ✓ Industrial Grade Powder Coated Housing
- ✓ Extra Wire Length Included, Plus Quick-Connects for Easy Installation.
- ✓ UL damp location rated

Multiple Ways to Install



VersaStrip™ 2 x 4' Linkable Strip Light 0-10V Dimmable

Model # 54598142

Part # ST-4-55-840-MV-D

100W 11000LM 120-277V

Case Pack - 1

Product Dim. 48 x 2.1 x 2.95 in.

8' Strip Lights
ships in a 4' Box

8' Tandem
Bracket Included



4' Dual Low/High Bay
Bracket Included
Motion Sensor
Accessory Included



4' Single
Individual or Multiple
Grid Layout Using
Bracket Accessories

LINKABLE STRIP LIGHTS



2' Linkable Strip Light,
Direct Wire or Plug-In

Model # 54263143

Part # ST-2-9-840-SV-N

8.5W 900LM 120V

Case Pack - 6

Product Dim. 24 x 1.6 x 2.3 in.



4' Linkable Strip Light,
Direct Wire or Plug-In

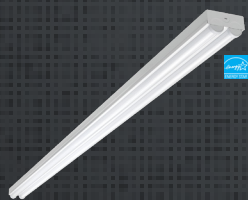
Model # 54261143

Part # ST-4-18-840-SV-N

17W 1800LM 120V

Case Pack - 4

Product Dim. 48 x 1.6 x 2.3 in.



8' Linkable Strip Light
(ENERGY STAR®)

Model # 54599142

Part # ST-8-90-840-SV-N

90W 9000LM 120V

Case Pack - 2

Product Dim. 95.5 x 4.1 x 2.4 in.



4' Linkable High Lumen Output
Strip Light - 0-10V Dimmable

Model # 54573161

Part # ST-4-45-850-MV-D

45W 5000LM 120-277V

Case Pack - 6

Product Dim. 48 x 1.8 x 2.2 in.





VersaStrip Accessories



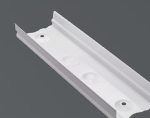
Motion Sensor
Model # 90600647



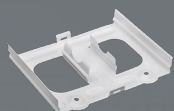
Cross Linking Bracket
Model # 90600651



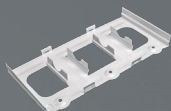
T Linking Bracket
Model # 90600649



Continuous Linking Bracket
Model # 90600737



Parallel Linking Bracket
Model # 90600738



Parallel Linking Bracket
Model # 90600650



L Linking Bracket
Model # 90600648



Adjustable Linking Bracket
Model # 90600652

Only works with 54598142
VersaStrip Light



40W Emergency LED Driver/BBU
Model # 70114401



40W Emergency LED Driver/BBU
Model # 70114402

NON-LINKABLE STRIP LIGHTS



2' Strip Light, Direct Wire
Model # 54260144
Part # ST-2-18-840-MV-N
17W 1800LM 120-277V
Case Pack - 6
Product Dim. 24 x 2.2 x 2.7 in.



4' Strip Light, Direct Wire
Model # 54283144
Part # ST-4-36-840-MV-N
34W 3600LM 120-277V
Case Pack - 4
Product Dim. 48 x 2.2 x 2.7 in.



**4' High Lumen Output Strip Light,
Compatible with Battery Back-up**
Model # 54583361
Part # ST-4-33-850-MV-N-EM
33W 4900LM 120-277V
Case Pack - 6
Product Dim. 48 x 1.8 x 2.2 in.

LIGHTING CONTROL AND SAFETY



**Multi-Volt Occupancy Sensor
with Daylight Sensor**
Model # 90600121



Universal Wattage BBU
Model # 701011011

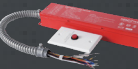


Universal Wattage BBU
Model # 90600143

ROUND

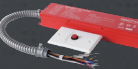


25W Emergency LED Driver/BBU
Model # 70112201

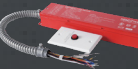


40W Emergency LED Driver/BBU
Model # 70114401

SQUARE



25W Emergency LED Driver/BBU
Model # 70112202



40W Emergency LED Driver/BBU
Model # 70114402

WRAP LIGHT

ARCHITECTURAL DIRECT | INDIRECT

EZ WRAP
INSTALL LIGHT

EZ Install Direct | Indirect Architectural Wrap

3,977 Direct Lumens | 2,725 Indirect Lumens

ETi Advantage

- ✓ Hinged lens and quick wire connectors make for quick and easy installation
- ✓ Perfect for use in classrooms, training centers and offices
- ✓ Continuous row mount (up to 3 fixtures)
- ✓ Suspension mounting chains included
- ✓ UL Damp location rated
- ✓ 0-10V Dimmable



3 Light Switch Controlled Lighting Modes No Special Wiring Needed



Direct + Indirect Mode
6,702 Lumens



Indirect Only
2,725 Lumens

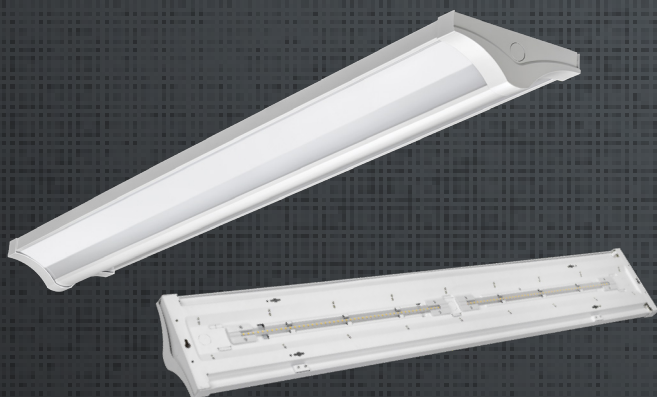


Indirect Mode
2700LM



Simply toggle wall switch 'ON' & 'OFF' within 3-seconds to change lighting modes.

WRAP LIGHTS



Direct/Indirect Wrap Light

4' High Lumen Output Wrap 0-10V Dimmable

Model # 56567241

Part # WR-4FT-6700LM-8-40K-MV-LVD

58W 6700LM Direct + Indirect, 4000LM Direct, 2700LM Indirect 120-277V

Case Pack - 2

Product Dim. 48.09 x 7.35 x 3.03in



Choose from several easy to install architectural mounting options



SURFACE MOUNT



PENDANT | STEM MOUNT



SUSPENSION MOUNT

CONTINUOUS ROW MOUNTING



Each Fixture Includes A Continuous Row Bracket

This bracket can be paired with all three primary mounting options (surface, suspension or pendant/stem mount) to create a unique architectural layout and design installation.



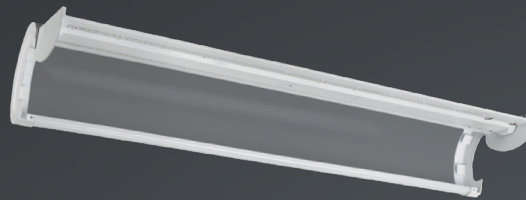
DIRECT/INDIRECT WRAP LIGHT ACCESSORIES

| Model # | Description | Compatible Model # |
|--|--|--------------------|
| Mounting | | |
| 95656724101 | Pendant/stem mounting kit, 8" stem length | 56567241 |
| Occupancy Sensor | | |
| 70201101-2 | External mount step dimming microwave occupancy sensor | 56567241 |
| 70205101 | OC sensor handheld remote programmer | 56567241 |
| Emergency LED Driver/BBU (BBU only field installed, no dimming) | | |
| 70112202 | Square, 25W, IP rated, 90 minutes | 56567241 |
| 70112201 | Round, 25W, IP rated, 90 minutes | 56567241 |
| Emergency LED Driver/BBU (BBU field installed w/OC sensor or dimming) | | |
| 70112202-2 | Square, 25W, IP rated, 90 minutes | 56567241 |
| 70112201-2 | Round, 25W, IP rated, 90 minutes | 56567241 |
| BBU Test Remote | | |
| 70203101 | Round BBU handheld test remote | 56567241 |

WRAP LIGHT

ALL PURPOSE & ARCHITECTURAL

EZ WRAP LIGHT
INSTALL



Captive Hinge



48" Commercial Wrap Light 0-10V Dimming

Model # 56514142
Part # WR-4-43-840-MV-D
39W 4300LM 120-277V

Product Dimensions 48 x 7.4 x 2.7 in.

Robust, Impact Resistant Lens



ETi Advantage

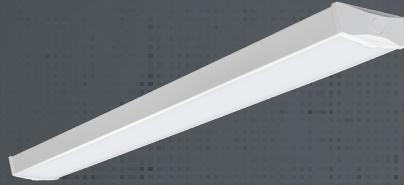
- ✓ Captive hinge frees up both hands for easy wiring
- ✓ Snap-in wire connectors make power connection a breeze
- ✓ Tandem connect up to 10 fixtures
- ✓ Compatible with step-dimming motion sensor
- ✓ Easy to install

WRAP LIGHTS



High Lumen

4' High Lumen Output Wrap 0-10V Dimmable (ENERGY STAR®)
Model # 54677441
Part # WR-4-57-940-MV-D
57W 5200LM 120-277V
Case Pack - 2
Product Dim. 48 x 10 x 3.1 in.



Compact

4' Compact Wrap Light
Model # 56513141
Part # WR-4-36-840-MV
40W 3600LM 120-277V
Case Pack - 6
Product Dim. 48 x 5 x 1.8 in.



Motion Sensor

4' Wrap Light with Motion Sensor (ENERGY STAR®)
Model # 54676142
Part # WR-4-40-940-SV-N-OS
40W 3600LM 120V
Case Pack - 2
Product Dim. 48 x 5.9 x 2.9 in.



Color Preference®

40" Color Preference® Wrap Light - TRIAC Dimmable (ENERGY STAR®)
Model # 56507113
Part # WR-40-26-802-SV-D
30W 2600LM 120V
Case Pack - 2
Product Dim. 39.9 x 4 x 2 in.



Closet Lighting

18" Closet Light with Pull Chain (ENERGY STAR®)
Model # 53603142
Part # CS-18-12-840-SV
16W 1200LM 120V
Case Pack - 2
Product Dim. 18 x 4.3 x 2 in.



LIGHTING CONTROL AND SAFETY

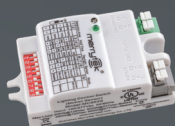


25W Emergency LED Driver/BBU
Model # 70112202

40W Emergency LED Driver/BBU
Model # 70114402



Universal Wattage BBU
Model # 90600143



Motion Sensor with Daylight Sensor
Model # 90600145



Step Dimming Motion Sensor,
Microwave with Daylight Sensor
Model # 90600144



2' Wrap

2' Wrap Light - 0-10V Dimmable
(ENERGY STAR®)
Model # 54655441
Part # WR-2-20-940-MV-D
20W 1800LM 120-277V
Case Pack - 4
Product Dim. 23.6 x 5.9 x 2.9 in.

4' Wrap

4' Wrap - 0-10V Dimmable
Model # 54676241
Part # WR-4-36-940-MV-D
34W 3600LM 120-277V
Case Pack - 2
Product Dim. 48 x 5.9 x 2.9 in.



4' Wrap with Step Dimming
Motion Sensor
Model # 54676241-I
Part # WR-4-36-940-MV-D-OS
34W 3600LM 120-277V
Case Pack - 2
Product Dim. 48 x 5.9 x 2.9 in.

4' Wrap - Battery Back-Up

4' Wrap with Battery Back-Up
Model # 54676341
Part # WR-4-36-940-MV-D-EM
34W 3600LM 120-277V
Case Pack - 2
Product Dim. 48 x 5.9 x 2.9 in.



4' Wrap with Battery Back-Up and
Step Dimming Motion Sensor
Model # 54676341-I
Part # WR-4-36-940-MV-D-EM-OS
34W 3600LM 120-277V
Case Pack - 2
Product Dim. 48 x 5.9 x 2.9 in.

WRAP LIGHT ACCESSORIES

| Model # | Description | Compatible Model # |
|---------------------------------|---|---|
| Motion Sensor | | |
| 90600144 | Step Dimming Motion Sensor with Daylight Sensor, Internal | 54676241, 54676341, 56514142 |
| 90600145 | Motion Sensor with Daylight Sensor | All Model Numbers |
| Emergency LED Driver/BBU | | |
| 70112202 | Square, 25W, IP rated, 90 minutes | 54655441, 54656241 |
| 70114402 | Square, 40W, IP rated, 90 minutes | 54676142, 54677441, 56513141, 56507113 |
| BBU | | |
| 90600143 | Universal Wattage BBU | 54676341 |

WRAP LIGHTS

LowPro™ COMMERCIAL & ECO



Commercial LowPro Wrap Light

4' Commercial LowPro Wrap Light

Model # 56802142

Part # WR-4FT-5500LM-8-40K-MV-LVD

48W 5500LM 120-277V



ECO LowPro Wrap Light

4' ECO LowPro Wrap Light

Model # 56801142

Part # WR-4FT-3200LM-8-40-SV-TVD

42W 3200LM 120V

TRIAC Dimmable - Residential



ETi Advantage

- ✓ Center basket detaches for easy installation
- ✓ Commercial and ECO models available
- ✓ Low profile surface mounting
- ✓ UL TBD location rated
- ✓ 0-10V Dimmable or TRIAC Dimming models



Remove Center Basket for Easy Wire Access

CEILING & SHOP LIGHTS

ALL PURPOSE



Reva Stepped and Traditional Lenses Available



1' x 2' Reva Stepped Lens
Model # 54648142
Part # CL-12-20-840-SV-D-G
20W 1500LM 120V

1' x 4' Reva Stepped Lens
Model # 54647142
Part # CL-14-40-840-SV-D-G
40W 3000LM 120V

1' x 4' Traditional Lens
Model # 54644142
Part # CL-14-40-840-SV-D-H
40W 3000LM 120V

1.5' x 4' Traditional Lens
Model # 54645142
Part # CL-14-75-840-SV-D-H
75W 5500LM 120V

1.5' x 4' Reva Stepped Lens
Model # 54649142
Part # CL-14-75-840-SV-D-G
75W 5500LM 120V

ETi Advantage

✓ High Impact Diffuser Lens

✓ Thin Profile

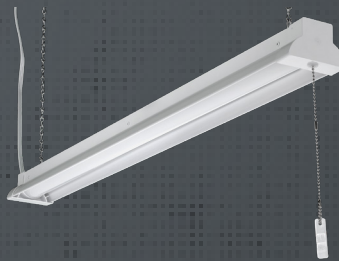
✓ TRIAC Dimmable

SHOP LIGHTS



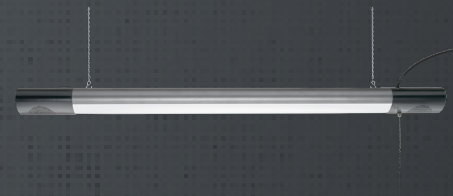
4' Linkable Shop Light

Model # 54103162
Part # SH-4-35-840-SV
36W 3300LM 120V
Suspension Mounting Accessories and
Power Linking Cable Included



40" Shop Light

Model # 54590141
Part # SH-40-30-840-SV
30W 2800LM 120V



42" Bluetooth Speaker Shop Light

Model # 55703142
Part # SH-42IN-3600LM-8-40K-SV-BT
40W 3600LM 120V

ETi Advantage

- ✓ Commercial strength material lighting for those tough jobs
- ✓ 4000K CCT 80CRI 120V

External Motion Sensor (90600121)
Compatible with 54103162

FLAT PANELS

WITH COLOR PREFERENCE® & LUMEN BOOST™



ECO Series Flat Panels

ETi's patented Color Preference® Technology allows the installer to select the desired color temperature with the flip of a switch!

ETi Advantage

- ✓ DLC Standard – high efficacy 110 LPW
- ✓ Robust, lightweight construction
- ✓ Non-yellowing, UV-resistant lens
- ✓ Excellent aesthetics at an affordable cost
- ✓ Perfect for new construction or retrofit projects
- ✓ Even edge to edge light distribution
- ✓ Office, medical, and educational facilities
- ✓ Optional BBU available

Installation Benefits

- Compact Recessed Driver box
- Easy-to-install replacement for lay-in troffers, baskets, and parabolic fixtures
- Easy Handling
- Pre-installed BBU Bracket
- Earthquake Clips already installed
- Ultra thin backlit design
- Multiple conduit points allows multiple accessory installation options



EC09 2x2 Flat Panels w/ Lumen Boost and Color Preference®

Model # 64222201

Part # FPCP-2X2-3125LM-8-CP3-MV-LVD-1PK

25W/30W/36W 3125LM/3750LM/4500LM 120-277V

Case Pack - 1

Model # 64222202

Part # FPCP-2X2-3125LM-8-CP3-MV-LVD-2PK

25W/30W/36W 3125LM/3750LM/4500LM 120-277V

Case Pack - 2



EC09 2x4 Flat Panels w/ Lumen Boost and Color Preference®

Model # 64224201

Part # FPCP-2X4-5000LM-8-CP3-MV-LVD-1PK

40W/45W/50W 5000LM/5625LM/6250LM 120-277V

Case Pack - 1

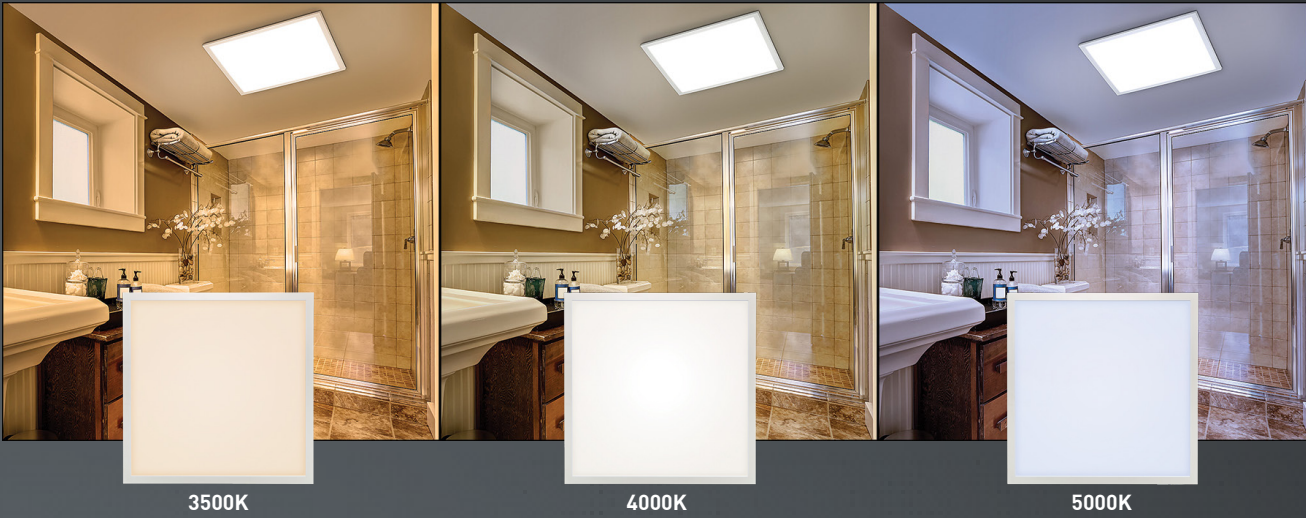
Model # 64224202

Part # FPCP-2X4-5000LM-8-CP3-MV-LVD-2PK

40W/45W/50W 5000LM/5625LM/6250LM 120-277V

Case Pack - 2





3500K

4000K

5000K

VALUE SERIES FLAT PANELS WITH ONE CCT OPTION

2x2 Value Series Flat Panels

Model # 64201131

Part # FPE-22-40-835-MV-D

40W 4000LM 120-277V

3500K

Model # 54320142

Part # FPE-22-40-840-MV-D

40W 4000LM 120-277V

4000K

3 INSTALLATION OPTIONS

Grid Ceiling/Suspension Mounting/Surface Mounting

FLAT PANEL ACCESSORIES

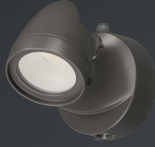
| Model # | Description | Compatible Model # |
|-------------|---|--|
| 70101101 | Universal wattage BBU for Non-isolated Driver, Ni-MH Battery illumination time \geq 90 minutes, recharge time \geq 24 hours | 64201131, 64201142, 64201162, 64201231 |
| 70302105 | 2'x2' ECO Flat Panel Surface Mounting Kit | 64204301 and 64204302 |
| 70303122 | 2'x2' Flat Panel Surface Mounting Kit | 64222202 and 64222201 |
| 70303124 | 2'x4' Flat Panel Surface Mounting Kit | 64224202 and 64224201 |
| 70302106 | 2'x4' ECO Flat Panel Surface Mounting Kit | 64205401 and 64205402 |
| 90600019 | Earthquake Clip Kit (10-pack, 4 clips/pk) | All Models |
| 95457326101 | Aircraft Cable for Suspension Mounting | All Models |

SECURITY LIGHTS

OUTDOOR ALL PURPOSE SAFETY, SECURITY & ACCENT



OUTDOOR SECURITY LIGHT WITH PHOTOCELL SENSOR



1-Head Security Light with Lumen Boost™ - Bronze
 Model # 51404141
 Part # SC-14W-1HD-1200LM-40K-SV-BZ
 7W/14W 600LM/1200LM 120V



1-Head Security Light with Lumen Boost™ - White
 Model # 51404142
 Part # SC-14W-1HD-1500LM-8-30K-SV-TD
 7W/14W 600LM/1200LM 120V



3-Head Security Light with Lumen Boost™ - Bronze
 Model # 51403141
 Part # SC-42W-3HD-3600LM-40K-SV-BZ
 21W/42W 1200LM/3600LM 120V



3-Head Security Light with Lumen Boost™ - White
 Model # 51403142
 Part # SC-42W-3HD-3600LM-40K-SV-WT
 21W/42W 1200LM/3600LM 120V

MOTION SENSOR SECURITY LIGHT WITH HI/LO BRIGHTNESS SETTING



2-Head Security Light With Color Preference® - Bronze
 Model # 51406111
 Part # SC-2HD-2400LM-8-CP3-SV-BZ
 28W 2400LM 120V



2-Head Security Light With Color Preference® - White
 Model # 51406112
 Part # SC-2HD-2400LM-8-CP3-SV-WT
 28W 2400LM 120V



2 IN 1 AREA/SECURITY LIGHT

Dusk-to-Dawn flood lighting with Hi-Lo motion activated light setting

- Hi-Lo Feature** 50% brightness at dusk, 100% brightness when motion detected
- Area Light** Off or 50% Light Setting, turns on at dusk
- Security Light** Adjustable range and light duration

OUTDOOR LIGHTING

SHOREBREAKER LIGHTING® & OUTDOOR FLUSHMOUNTS



OUTDOOR FLUSHMOUNTS



Color Preference® Flushmount - Black
 Model # 54466101
 Part # FME-83-802-MV-N-N-B
 12.5W 830LM 120-277V



Color Preference® Flushmount - White
 Model # 54466201
 Part # FME-83-802-MV-N-N-W
 12.5W 830LM 120-277V

LED HORTICULTURE LIGHTING

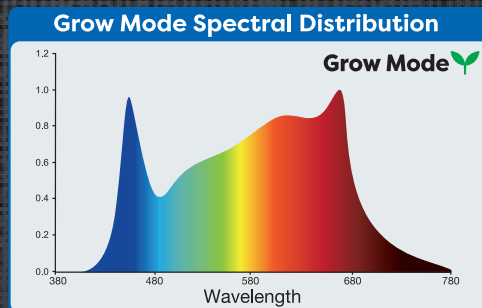


Grow Elite® 18" Adjustable LED Under Cabinet Light
Model # 53508101
Part # GL-18IN-500LM-8-CP3-SV-TD
9W 500LM 120V

18" Adjustable LED Under Cabinet Light
with Grow Mode 2700K 3000K 4000K Grow Mode



- Cabinet Surface Mountable
- MAGNA MOUNT™
- Adjustable Beam Angle
- Improves plant health and yield
- Linkable



Visit www.groweliteled.com
for detailed product information.

ACCESSORIES

OCCUPANCY SENSORS & BATTERY BACK-UP UNITS

OC Sensors



Step Dimming Motion Microwave Sensor

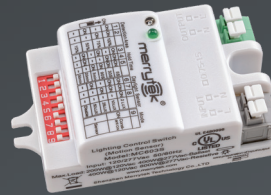
Model # 70201101-2

Part # MC054V-RC2-D

Description: 16m x 15m detection zone, 360° detection angle (ceiling), externally mounted

Compatibility:

Wrap Light: 56567241



Step Dimming Motion Sensor, Microwave with Daylight Sensor

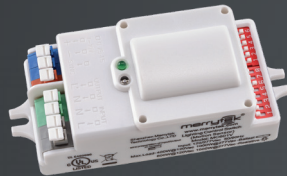
Model # 90600145

Part # MC603S

Description: Internally mounted, up to 49' mounting height, detection angle 150° (wall), 360° (ceiling)

Compatibility:

Wrap Lights: 56507113, 54655441, 54676241, 54676341, 56514142, 56513141



Step Dimming Motion Sensor, Microwave with Daylight Sensor

Model # 90600144

Part # MC601V

Description: Internally mounted, up to 19' mounting height, detection angle 150° (wall), 360° (ceiling)

Compatibility:

Wrap Lights: 54655441, 54676341, 54676241, 56507113, 54677441



Multi Volt Occupancy Sensor with Daylight Sensor

Model # 90600121

Description: Externally mounted, up to 19' mounting height, detection angle 30°-150°, knockout or link connection

Compatibility:

Strips: 54263143, 54261143, 54260144, 54260241, 54283144, 54573161, 54599142, 54283241
VersaStrip: 54598142



VersaStrip Motion Sensor

Model # 90600647

Part # OS-ST-01

Description: On/Off OC sensor with adjustable duration level (2 minutes, 5 minutes, or 15 minutes). Only compatible with the VersaStrip light when mounted side-by-side (twin 48" strip lights) using the parallel linking bracket (included with VersaStrip light)

Compatibility:

VersaStrip: 54598142

BBU Accessories

Square BBUs



Model # 70112202 / 70112202-2

Part # EMA25FY-170

Description: 25w Square Battery Back-up, Li-Ion Battery illumination time \geq 90 minutes @ 25w, recharge time 24 hours, 100-347V, IP65

Compatibility:

Downlights: All Model #s except: 53189111
 SMD 6 Twist Fit Disk: 56578111, 56578411, 56578211, 56578311, 56578501, 56578801, 56578611, 56578711
 Flushmounts: All Model #s except 54614242, 54620313
 Spin Lights: All Model #s
 Strip Lights: 54263143, 54261143, 54260144
 Wrap Lights: 54655441, 54676241, 54676241-I, 54676341, 54676341-I, 56567241, 56514142, 53603142
 Flat Panels: 64222202, 64222201
 Under Cabinet Lights: All Model #s
 Security Lights: All Model #s
 Outdoor Flushmounts: 54466101, 54466201

Square BBUs



Model # 70114402 / 70114402-2

Part # EMA40FY-170

Description: 40w Square Battery Back-up, Li-Ion Battery, illumination time \geq 180 minutes @ 40w, recharge time 24 hours, 100-347V

Compatibility:

Downlights: 53189111
 Flushmounts: 54614242, 54620313
 Ceiling Lights: 54647142, 54644142
 Strip Lights: 54283144, 54573161, 54583361, 54598142
 Wrap Lights: 54676142, 54677441, 56513141, 56507113, 56802142
 Flat Panels: All Model #s except 64222202, 64222201

Round BBUs



Model # 70112201 / 70112201-2

Part # EMUFO-25170-YY

Description: 25w Round Battery Back-up, Li-Ion Battery, illumination time \geq 90 minutes @ 25w, recharge time 24 hours, 100-347V, IP65

Compatibility:

Strip Lights: 54263143, 54261143, 54260144
 Wrap Lights: 56567241
 Shop Lights: 54568143



Model # 90600143

Part # EMJ-0825

Description: LiFEPO4 Battery, illumination time \geq 90 minutes @ 25W, recharge time 48 hours max. 120-277V

Compatibility:

Strip Lights: 54583361
 Wrap Lights: 54676341

Round BBUs



Model # 70114401 / 70114401-2

Part # EMUFO-40170-YY

Description: 40w Round Battery Back-up, Li-Ion Battery, illumination time \geq 180 minutes @ 40w, recharge time 24 hours, 100-347V, IP65

Compatibility:

Strip Lights: 54283144, 54573161, 54583361, 54598142
 Shop Lights: 54103162, 54590141

BBU for Non-Isolated Driver



Model # 70101101

Part # BLD-AM08N

Description: Universal Wattage, Ni-MH Battery illumination time \geq 90 minutes, recharge time \geq 24 hours, 120-277VAC

Compatibility:

Downlights: 53185143, 53185142, 53186401, 53186311, 53192211, 53189111, 53809111, 53808211, 53807211
 Strip Lights: 54573161, 54583361
 Flat Panels: 64201131, 54320142, 54320162, 64201231, 54321142, 54321162

BBU for Isolated Driver



Model # 70101102

Part # BLD-AM08D

Description: Universal Wattage, Ni-MH Battery illumination time \geq 90 minutes, recharge time \geq 24 hour, 120-277V

Compatibility:

Flat Panels: 64204301, 64204302, 64205401, 64205402



ETi Solid State Lighting
720 Northgate Parkway
Wheeling, IL 60090

855-384-7754 | www.ETiSSL.com