

11IN DECORATIVE ORBIT FLUSHMOUNT  
WITH COLOR PREFERENCE<sup>®</sup>

MODEL# 564101120 | 1,066 LUMENS | 13.8W | 77.2LPW | 3 CCT



With our proprietary  
**TwistFit**  
Mounting System

11IN DECORATIVE ORBIT FLUSHMOUNT WITH COLOR PREFERENCE<sup>®</sup>

**SUPERIOR** VALUE & PERFORMANCE



**PRODUCT OVERVIEW**

The 11" Decorative Orbit Flushmounts are an easy-to-install modern solution for any location in home or office. Mounts quickly into an existing junction box using the included TwistFit mounting bracket. The TwistFit bracket installs in less than 2 minutes and ensures a tight seal that won't allow bugs or dust to enter. Additionally, the Decorative Orbit Flushmount does not need the lens removed to install, simply twist the fixture into place.

Our Decorative Orbit Series is ENERGY STAR<sup>®</sup> rated and delivers 1,066 lumens of extremely uniform ambient illumination in three CCT Color Preference<sup>®</sup> settings (3000K, 4000K & 5000K). This fixture is compatible with a wide range of triac dimmers and qualifies in UL Damp Locations. The Decorative Orbit Flushmount series provides long-lasting maintenance free operation thanks to its reported 89.0% lumen maintenance at 60,000 hours and projected L70 at 180,000 hours. Suitable for use in clothes closets and closet storage spaces when installed in accordance with the NEC 410.16 (A)(3) and 410.16 (C)(5) spacing requirements. Ideal commercial and residential applications include, but are not limited to kitchens, pantries, bedrooms, bathrooms, closets, stairways, storage rooms, multi-family, general hallways and corridors and more.

Our entire team takes great pride in our dedication to providing innovative in-stock lighting solutions that typically ship in 2-3 days with the product reliability and quality that you can always depend on from ETI SSL.

**STOCK ORDERING INFORMATION** (typical 2-3 day shipment lead time)<sup>1</sup>

Catalog Logic/PT#	Model #	UPC	Size	Lumens	Wattage	LPW	CCT <sup>2</sup>	CRI	Voltage	Dimming	Energy Star <sup>3</sup>
FMNL-11IN-1000LM-8-3CP-SV-TD	564101120	849489066462	11"	1,066	13.8	77.2	3 CCT	80 (min)	120V	TRIAC	Yes

Notes:

1. Stock SKUs typically ship in 24-48 hours upon receipt of an approved released order.

2. 3-CCT offers three Color Preference<sup>®</sup> options: 3000K, 4000K & 5000K. Factory set to 3000K.

3. Search first 6-digits of the model # followed by '##' on the ENERGY STAR<sup>®</sup> website database...(Ex: '5641011##') to view certifications.

## FMNL Series

11IN Decorative Orbit Flushmount with Color Preference®

Model# 564101120 | 1,066 Lumens | 13.8W | 77.2LPW | 3 CCT | ENERGY STAR® | 5-yr Warranty

### CATALOG LOGIC | PART# DECODER<sup>1,2,3</sup>

#### FMNL-11IN-1000LM-8-3CP-SV-TD (Model # 564101120)

<b>FMNL</b>	<b>11IN</b>	<b>1000LM</b>	<b>8</b>	<b>3CP</b>	<b>SV</b>	<b>TD</b>
Series	Size	Lumens <sup>3</sup>	CRI	CCT	Voltage	Dimming
<b>FMNL</b> Flushmount	<b>11IN</b> 11" DIA	<b>1000LM</b> Nominal Lumens	<b>8</b> 80CRI (minimum)	<b>3CP</b> 3000K 4000K 5000K	<b>SV</b> Single Voltage (120V)	<b>TD</b> Triac Dimming

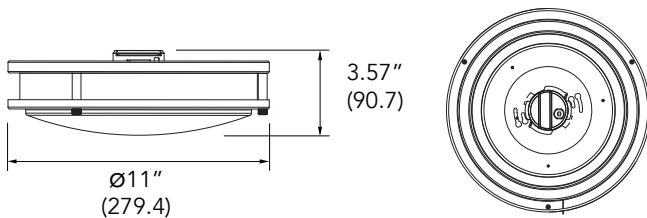
#### Notes:

1. This product is not configurable, only designated 'Stock' SKUs are available.

2. Decoder is to help clarify Catalog Logic/Part # configurations only (see Stock Ordering Information for available SKUs).

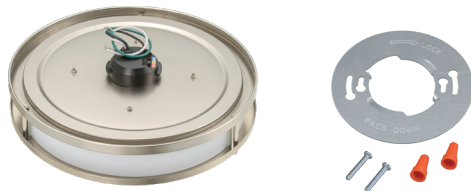
3. Lumen values shown are nominal (see Stock Ordering Information or Photometric Details sections for additional performance details).

### KEY DIMENSIONAL INFORMATION



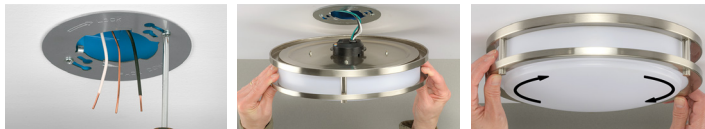
Note: All dimensions are shown in inches (millimeters).

### INCLUDED IN THE BOX



**TwiStFit**  
Mounting System

QUICK AND EASY INSTALLATION



### AVAILABLE STOCK ACCESSORIES (must be ordered separately)



#### Emergency LED Driver/BBU<sup>1</sup>

(BBU field installed G2-no dimming | G3 with dimming)

Catalog Logic/PT#	Model #	Description
EMA25FY-170 (G2)	70112202 <sup>1</sup>	Square, 25W, IP rated, 90 minutes
EMA25FY-170 (G3)	70112202-2 <sup>1</sup>	Square, 25W, IP rated, 90 minutes
EMA40FY-170 (G3)	70114402-2 <sup>1</sup>	Square, 40W, IP rated, 90 minutes

#### Notes:

1. BBUs certified in CA Title 20 MAEDBS. (search by BBU cat logic/PT#, Ex. 'EMA40FY-170')

### MISCELLANEOUS PRODUCT SPECS & DETAILS

#### Load Information

<b>Power Factor</b>	> 0.90
<b>THD</b>	< 20%
<b>Frequency</b>	50/60 Hz
<b>Sound Rating</b>	< 20 Dba
<b>Low Temp Start</b>	-20° C (-4° F)
<b>Max Temp</b>	45° C (113° F)
<b>Unit Weight</b>	1.74 lbs

#### Lumen Maintenance

Ambient Temperature	TM-21 Lumen Maintenance (60,000 hours)
25° C (77° F)	> 89.0%

Ambient Temperature	TM-21 Theoretical L70 (hours)
25° C (77° F)	180,000

#### Shipping Information

Size	Unit Weight <sup>1</sup>	Pallet
12.95 x 10.5 x 13	2.47 lbs	4818

1. Case pack weighs 6.32 lbs (2 units / per case pack).

### PHOTOMETRIC DETAILS

#### Luminaire Data: FMNL-11IN-1000LM-8-3CP-SV-TD

IES File Name	564101120_30K.IES
CCT & CRI	3 CCT, 80CRI minimum
Initial Delivered Lumens	1,066
Wattage	13.8W
Efficacy	77.2
Beam Angle	50% = 126.3° 10% = 180.0°
Spacing	0° = 1.30 90° = 1.30

Photometric values based on tests performed in compliance with LM-63 & LM-79. Test reports are from 3000K factory set data.

#### Indoor Candela Plot

