

2022



COMMERCIAL
INDUSTRIAL
RESIDENTIAL

LED

INDOOR/OUTDOOR LIGHTING CATALOG

ENERGY SAVING SOLUTIONS

FOR INTERIOR AND EXTERIOR SPACES



ETi Solid State Lighting, Inc. – A Unique Approach. Extraordinary Results.

Our manufacturing capabilities, end-user-driven collaborative product development capability, and global management team have established ETi Solid State Lighting as a leading LED lighting brand as well as one of the largest private-label manufacturers of LED lighting products to the North America market.



Our new North American corporate headquarters and 190,000 sq ft distribution center is located just outside of Chicago in Wheeling, Illinois.

ETi is a Subsidiary of NVC International

Global Operation

NVC International’s operation spans 29 countries with five regional sales offices across the USA, Europe, Asia, and the Middle East. As a 100% vertically integrated global supplier of LED components, lamps, and luminaires, we sell to many of the largest lighting brands and retailers in the world.

Manufacturing

NVC International, ETi’s parent company, is among the largest lighting manufacturers in the world with over 6 million sq. ft. of manufacturing space and 10,000 employees. Our expanded manufacturing footprint in Vietnam will allow ETi to continue to offer our customers innovative, high-quality LED lighting products at a competitive price.

Quality & Innovation

100% of our state-of-the-art, patented products feature high-quality Samsung LEDs. Our robust product development organization features four R&D centers and over 90 mechanical and electrical engineers.

Global Partnerships

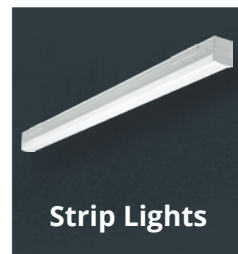
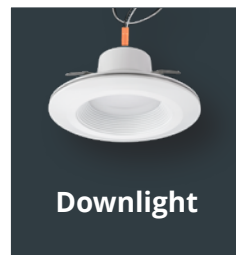
NVC International and Samsung are proud to be strategic LED partners. All of our lighting products feature Samsung’s high-quality LEDs.



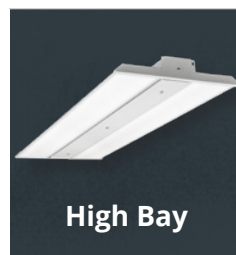
TABLE OF CONTENTS

COMMERCIAL/RESIDENTIAL INDOOR FIXTURES	
SMD6 Surface Mount Disk Lights	6
Recessed Downlights	7
Flushmounts-LowPro Disc & Decorative	10
Flushmounts with Color Preference® & NightLightR.....	12
Flushmounts- with Color Preference® & Fixed CCT.....	13
Spin Lights®.....	14
Under Cabinet Lights.....	15
Strip Lights.....	16
Wrap Lights	18
Ceiling Lights & Shop/Task Lights	23
Flat Panels	24
INDUSTRIAL LIGHTING FIXTURES	
Linear High Bays	26
Rapid Ship Program for High Bays.....	29
ECO Round High Bays.....	30
Vapor Tights	32
OUTDOOR LIGHTING FIXTURES	
Security Lights	33
Wall Packs.....	34
Marine Bulkheads & Flushmounts.....	35
T8/T5 LINEAR REPLACEMENT LAMPS	
Ballast Bypass LED Glass Tubes-Double End Power.....	36
EMERGENCY & EXIT LIGHTING FIXTURES	
Emergency Lights.....	38
Exit Signs.....	39
HORTICULTURE LIGHTING FIXTURES	
Grow Elite.....	40
ACCESSORIES	
OC Sensors & BBUs.....	42

RESIDENTIAL & COMMERCIAL:



INDUSTRIAL:



To Order:

Call ETi SSL Customer Service
8 a.m. - 5 p.m., CST, Monday - Friday
1-855-ETI-SSL (1-855-384-7754)
www.ETiSSL.com



ETi SSL is a NVC Company

ETi and NVC International to Expand Production in Vietnam!

In 2019 ETi opened the first large-scale lighting factory in Vietnam’s new Yen Phong economic zone, featuring 120,000 sq ft of manufacturing space to produce ETi’s High Bay, Strip, Wrap, and Flush Mount fixtures.

A second factory in Yen Phong is now under construction with plans to open in late 2022.

These two state-of-the-art factories will benefit from a much lower duty rate, a vertically integrated supply chain, and easy access to multiple deep-water ports and international airports.





QUALITY, INNOVATION, AND VALUE

ETi TOTAL LIGHTING SOLUTIONS

Custom Project Lighting Specialists

OUR CORE VALUES:

Quality: Superior product design, uncompromising components and material.

Innovation: New lighting technologies that improve quality of life and install quickly and easily.

Value: We deliver quality and innovation at a great price.



ETi's Color Preference® patented technology provides multiple CCT choices in one fixture. Colors range from 2700K to 5000K depending on the product. Simply move the switch on the back of the ETi fixture to obtain the desired ambiance for any room.

U.S. Patents - 10,091,855, 10,462,871, 10,492,262



Like our Color Preference® technology, Lumen Boost™ allows users to select the best light output for their lighting area. Easily adjustable intensity meets the needs of different room sizes, adjust for user preferences, and activities.



All of our NightLightR™ models feature an integrated 2000K CCT night light hidden in the base of each light fixture. The light fixture can be switched from white light to night light using the rooms light switch. The warm 2000K indirect light creates a comforting glow at night.

U.S. Patent Pending



The LowPro™ line of LED downlights is unmatched in the marketplace at a slim 1.3" profile. LowPro™ downlights are designed for difficult low clearance installations. These lights can be installed in ceiling locations that traditional downlights do not fit. Mounting guide plate accessories are now available for new construction/remodel projects.



SnapFit™ Mounting System is an innovative way to quickly install a luminaire. Simply secure the SnapFit™ bracket that is included with the ETi fixture to a j-box and quickly snap the fixture into the bracket without tools.



TwisFit™ Mounting System is an innovative way to quickly install a luminaire. Simply secure the TwistFit™ bracket that is included with the ETi fixture to a j-box and quickly snap the fixture into the bracket without tools.



ETi is always developing innovative ways to install lighting fixtures to enhance the customer's experience. From wrap lights with hinged lens covers to screwing in fixtures with ETi's patented SpinLight® collection. ETi continues to develop technology that makes wiring fixtures a breeze. U.S. Patent # 9500352, 9541270, D776326, CND Patent # 169113



For special, custom, and large-scale lighting projects, ETi is your Total Lighting Solution.

Our Total Lighting Solutions (TLS) Team consists of Product Development Professionals, Project Managers, Engineers, and Sourcing Managers, as well as our North American Sales Team. First, we work directly with customers to define lighting project requirements. From there, the TLS team will match those requirements to existing ETi products, Fast Track products, or utilize our XPD Program to design a custom product that meets exact project specifications. Depending on the scope of the project, all three programs could be utilized.

Stock Products: Over 300 models in stock, ready to ship.

Fast Track: Over 1,000 products from our international product assortment, 10 to 12-week lead time.

XPD Fully Custom Product: Up to 20-week lead time.

TYPICAL PROJECT TIMELINE



ETi PRODUCT RESOURCES



Total Lighting Solutions
Volume 1
Residential and
Multi-Family Housing



Total Lighting Solutions
Volume 2
Municipalities, Schools
& Universities



Total Lighting Solutions
Volume 3
Parking Garages

SMD6 SURFACE MOUNT DISK LIGHTS



RECESSED DOWNLIGHTS LowPro™ CANLESS DIRECT MOUNT



TwistFit Mounting System

Compatible with 3-4" square/octagonal j-box



TwistFit
Mounting
Bracket



Quickly Twist the Fixture into Place!



ETi Advantage

- ✓ Innovative TwistFit j-box mounting system makes installation easy & ensures a tight, no-gap fit against the ceiling
- ✓ Can also retrofit into a 5"/6" recessed can with optional accessory kit
- ✓ No need to remove lens to install, extremely dirt & insect resistant
- ✓ Optional color trim kits available: black, oil rubbed bronze, & brushed nickel
- ✓ UL wet location rated
- ✓ TRIAC Dimmable



ETi Advantage

- ✓ Canless direct ceiling mount design
- ✓ Needs only 1.3" clearance for installation
- ✓ 5-CCT 90+ CRI ColorPreference is standard
- ✓ Optional designer color trim kits available
- ✓ JAB8 certified & can be used to comply w/ T24
- ✓ Robust metal remote driver box design
- ✓ UL wet location & IC rated
- ✓ TRIAC Dimmable



3" LowPro Recessed Downlight
Model # 53840101
Part # DLLP-3IN-550LM-9-5CP-SV-TD
10W 550LM 120V

4" LowPro Recessed Downlight
Model # 53808103
Part # DLLP-4IN-650LM-9-5CP-SV-TD
11W 650LM 120V

6" LowPro Recessed Downlight
Model # 53807103
Part # DLLP-6IN-900LM-9-5CP-SV-TD
15W 900LM 120V

8" LowPro Recessed Downlight
Model # 538292020
Part # DLLP-8IN-1800LM-9-5CP-SV-TD
25W 1800LM 120V

Wet Location Rated!



3000K Fixed CCT



Model # 56578111 Part # FMDL-7.5IN-1000LM-8-30K-SV-TD 14W 1000LM 120V

Model # 56578411 Part # FMDL-7.5IN-1500LM-8-30K-SV-TD 20W 1500LM 120V



3000K/4000K/5000K



Model # 56578211 Part # FMDL-7.5IN-1000LM-8-CP3-SV-TD 14W 1000LM 120V

Model # 56578311 Part # FMDL-7.5IN-1500LM-8-CP3-SV-TD 20W 1500LM 120V



Patented COLOR PREFERENCE® field selectable color temperature system and driver helps to provide added design flexibility and simplified SKU reduction and complexity.

An integrated switch on the remote driver box toggles between 2700K, 3000K, 3500K, 4000K and 5000K. (set to 2700K standard from the factory)



Available Accessories (purchased separately)



Model # 90600754 Model # 90600755 Model # 90600756



5"/6" Recessed Can Install Kit
Model # 95657811101



3" Guide Plates
Model # 70306101
Compatible with 3" LowPros

4" Guide Plates
Model # 70307101
Compatible with 4" LowPros

5" Guide Plates
Model # 70308101
Compatible with 5" LowPros

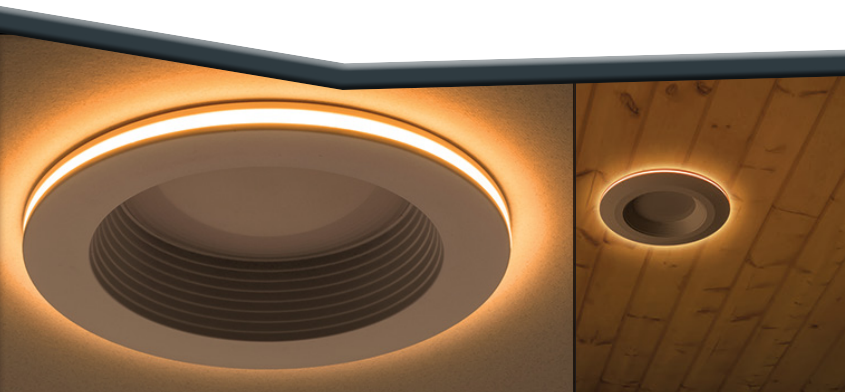
6" Guide Plates
Model # 70313101
Compatible with 6" LowPros

Legacy 5" Available With 4CCT COLOR PREFERENCE®



5" Model # 53807211 Part # DL-5-90-906-SV-D 15W 900LM 120V 2700K, 3000K, 4000K, 5000K

RECESSED DOWNLIGHTS



Retrofit Existing Cans

NightLIGHTR

Integrated 2000K Night Light trim delivers warm accent lighting to kitchens, bedroom, family rooms, and media rooms.

2 lights in 1: Warm accent lighting and Energy efficient Area lighting all in one!



No Extra Wiring Needed!

4" Color Preference® Downlight with Night Light Trim
 Model # 53805102
 Part # DL-4-625-907-SV-D
 10.5W 625LM 120V



6" Color Preference® Downlight with Night Light Trim
 Model # 53804102
 Part # DL-6-67-907-SV-D
 11W 670LM 120V



30-in-1 Downlight with Color Preference® & Selectable Lumens

- 3 Level Lumen Adjust
- 5 x CCT Selectable
- 2 Trim Color Choices

LUMEN BOOST



4"
 Model # 53802102
 Part # DL-4-10-907-SV-D
 15W 600/800/1000LM 120V



6"
 Model # 53801102
 Part # DL-6-11-907-SV-D
 17W 700/900/1100LM 120V

ETi Advantage

- ✓ TRIAC Dimmable
- ✓ 2 Baffle Rings included
- ✓ Wet Rated
- ✓ 2700K, 3000K, 3500K, 4000K, or 5000K CCT
- ✓ Title 24 JA8 compliant

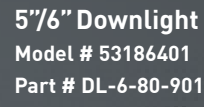
COLOR PREFERENCE® RETROFIT KITS

- TRIAC Dimmable
- 120V
- 90CRI

2700K/3000K/4000K CCT

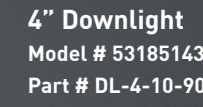


4" Downlight
 Model # 53185142
 Part # DL-4-10-901-SV-D
 10W 625LM 120V

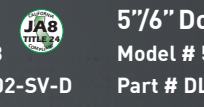


5 1/2" Downlight
 Model # 53186401
 Part # DL-6-80-901-SV-D
 8.5W 800LM 120V

3000K/4000K/5000K CCT



4" Downlight
 Model # 53185143
 Part # DL-4-10-902-SV-D
 10W 625LM 120V



5 1/2" Downlight
 Model # 53186311
 Part # DL-6-80-902-SV-D
 8.5W 800LM 120V

Model # 53186311 & 53186401 do not include torsion springs - Model # 953186311-B01 accessory kit sold separately E26 adapter still included

COLOR PREFERENCE® DOWNLIGHTS FOR NEW CONSTRUCTION/REMODEL PROJECTS

120-277V 3000K/3500K/4000K/5000K



5 1/2" Color Preference® Downlight 0-10V Dimmable
 Model # 53192211
 Part # DL-6-80-903-MV-D
 14W 800LM 120-277V



8 1/2" Color Preference® Downlight 0-10V Dimmable
 Model # 53189111
 Part # DL-8-30-903-MV-D
 40W 3000LM 120-277V

SINGLE CCT RETROFIT KITS



2700K CCT
4" AC Power Recessed Downlight
 Model # 53182201
 Part # DL-4-625-827-SV-D
 8W 625LM 120V



2700K CCT
5 1/2" AC Power Recessed Downlight
 Model # 53193101
 Part # DL-6-67-827-SV-D
 9W 670LM 120V

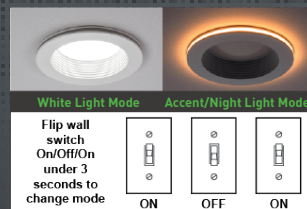
CANLESS/RECESSED CAN WITH INTEGRAL J-BOX



4" Canless/Recessed Can with Integral J-Box
 Model # 538411020
 Part # DLJB-4IN-720LM-9-5CP-SV-TD
 12W 720LM 120V



6" Canless/Recessed Can with Integral J-Box
 Model # 538421020
 Part # DLJB-6IN-880LM-9-5CP-SV-TD
 14.6W 880LM 120V



FLUSHMOUNTS

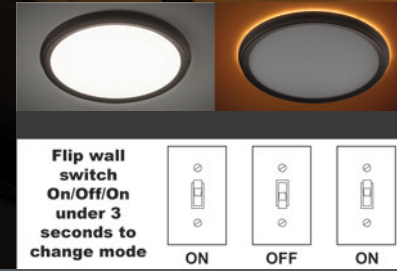
LOWPRO DISC & DECORATIVE



NightLIGHTR

3 Color Selectable
COLOR PREFERENCE®

WITH ACCENT LIGHT/NIGHT LIGHT



NightLIGHTR

3 Color Selectable
COLOR PREFERENCE®

ETi Advantage

- ✓ Custom trim to stylize your space
- ✓ 2000K warm accent trim
- ✓ Damp location rated
- ✓ TRIAC Dimmable

3 Easy Installation Methods

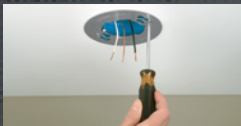
BOXLESS



SnapFit™
Mounting System



TwistFit™
Mounting System



ETi Advantage

- ✓ Suitable for both new construction and remodel installations
- ✓ Premium Samsung LEDs
- ✓ TRIAC Dimmable
- ✓ 2 Lights in 1: Warm accent lighting and energy efficient area lighting all in one!

13" DECORATIVE FLUSHMOUNT WITH ACCENT LIGHT/NIGHT LIGHT 3000K/4000K/5000K CCT



White Finish
Model # 56576111
Part # FMNL-13IN-1350LM-8-CP3-SV-TD-WT
17W 1350LM 120V



Brushed Nickel Finish
Model # 56576112
Part # FMNL-13IN-1350LM-8-CP3-SV-TD-BN
17W 1350LM 120V

TwistFit™
Mounting System

11" DECORATIVE FLUSHMOUNT WITH ACCENT LIGHT/NIGHT LIGHT 3000K/4000K/5000K CCT



White Finish
Model # 56572113
Part # FMNL-11IN-900LM-8-CP3-SV-TD-WT
14W 900LM 120V



Brushed Nickel Finish
Model # 56572114
Part # FMNL-11IN-900LM-8-CP3-SV-TD-BN
14W 900LM 120V



Oil Rubbed Bronze Finish
Model # 56572115
Part # FMNL-11IN-900LM-8-CP3-SV-TD-ORB
14W 900LM 120V

SnapFit™
Mounting System

7.5" CEILING LIGHT WITH 2000K ACCENT LIGHT/NIGHT LIGHT 3000K/4000K/5000K CCT



White Finish
Model # 56568114
Part # FMNL-7.5IN-800LM-8-CP3-SV-TD-WT
12W 800LM 120V



Brushed Nickel Finish
Model # 56568116
Part # FMNL-7.5IN-800LM-8-CP3-SV-TD-BN
12W 800LM 120V



Black Finish
Model # 56568115
Part # FMNL-7.5IN-800LM-8-CP3-SV-TD-BK
12W 800LM 120V

TwistFit™
Mounting System

ACCESSORIES AVAILABLE FOR PURCHASE



Junction Box
Model # 90600760
Compatible Model # 56568114/56568115/
56568116/56576111/56576112



E26 Adaptor with Torsion Springs Kit
Model # 95657611101
Compatible Model # 56568114/56568115/
56568116/56576111/56576112



Battery Back-up
Model # 70112202
Compatible with All
Flushmounts

FLUSHMOUNTS

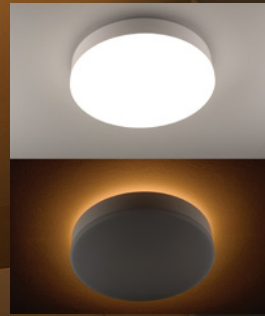
WITH COLOR PREFERENCE® & NIGHTLIGHTR™



NightLIGHTR

11" & 16" Color Preference®
Flushmount with Night Light

NightLightR Accent lighting
creates a warm ambiance in
any room of your home



Integrated Night Light
Trim Emits Warm
2000K CCT Glow

3 Color
Selectable
**COLOR
PREFERENCE®**

FLUSHMOUNTS

WITH COLOR PREFERENCE® & FIXED CCT



Decorative Orbit Flushmounts with Color Preference® Technology



11" Deco Orbit Flushmount
Model # 564101120
Part # FMNL-11IN-1000LM-8-3CP-SV-TD
14W 1000LM 120V
3000K/4000K/5000K CCT



15" Deco Orbit Flushmount
Model # 564111120
Part # FMNL-15IN-1600LM-8-3CP-SV-TD
22W 1600LM 120V
3000K/4000K/5000K CCT



32" Deco Orbit Flushmount
Model # 564121120
Part # FMNL-32IN-3000LM-8-3CP-SV-TD
42W 3000LM 120V
3000K/4000K/5000K CCT

3 Color
Selectable
**COLOR
PREFERENCE®**

Color Preference® Technology
allows the installer to easily
select the preferred CCT from
three or more settings!

Suitable for Both Dry & Damp Locations | 5 Year Warranty, L70 >50,000 Hours

ETi Advantage

- ✓ Integrated Warm 2000K Night Light**
- ✓ Patented 3 CCT Color Preference® Technology
- ✓ TRIAC Dimmable
- ✓ Closet Rated
- ✓ ADA Compliant
- ✓ UL Damp Rated
- ✓ Impact Resistant Non-Yellowing Lens

Technology

- Integrated 2000K night light can be turned on/off by toggling wall light switch!
- 3 CCT Color Preference® Technology delivers total choice of CCT: 3000K, 4000K, or 5000K

Control

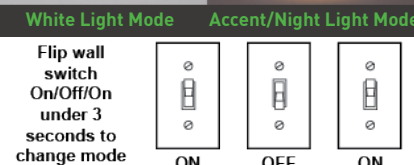
- Dimmable with TRIAC Dimmer

Features & Specifications

- 120V
- 80CRI
- Temp rating -4°F - 113°F
- IC Rated for Direct Contact with Insulation
- Meets NECA 410.16 Requirements
- UL Damp Rated
- L70>50,000

*U.S.A. Patent 15/871,433, **Patent Pending

**NIGHT LIGHT CAN BE
TURNED ON/OFF
BY TOGGING WALL
LIGHT SWITCH!**



11" Color Preference® LED Flushmount with Night Light

Model # 56546103
Part # FMNL-11IN-900LM-8-CP3-SV-TD
14W 900LM 120V 80CRI 3000K/4000K/5000K CCT

16" Color Preference® LED Flushmount with Night Light

Model # 56549102
Part # FMNL-16IN-1400LM-8-CP3-SV-TD
22W 1400LM 120V 80CRI 3000K/4000K/5000K CCT

Flushmount - Single CCT 2700K or 4000K



12" Low Profile
Non-Dimmable
Model # 54436201
Part # FM-12-14-827-MV-N-B
14W 980LM 120-277V



16" Low Profile
Non-Dimmable
Model # 54437201
Part # FM-16-22-827-MV-N-B
22W 1500LM 120-277V



12" Low Profile
Non-Dimmable
Model # 54436241
Part # FM-12-14-840-MV-N-B
14W 1000LM 120-277V



5" Universal Round Closet | Utility | Garage Light
Model # 564212420
Part # UTRD-5IN-8-40K-SV-WT
6.6W 650LM 120V

Color Preference® 3000K/4000K/5000 CCT



12" Low Profile 0-10V Dimmable
Model # 54436511
Part # FM-12-16-902-MV-D-B
10W 1000LM 120-277V

Flushmount - Single 4000K CCT



7" Low Profile
Non-Dimmable
Model # 54663142
Part # FM-7-11-840-SV-N-O
11.5W 810LM 120-277V



16" Low Profile
Non-Dimmable
Model # 54437241
Part # FM-16-22-840-MV-N-B
22W 1600LM 120-277V



12" Reva Stepped Lens
TRIAC Dimmable
Model # 54074343
Part # FM-12-14-840-SV-D-E
14W 1000LM 120-277V



24" Reva Stepped Lens
TRIAC Dimmable
Model # 54614242
Part # FM-24-40-840-SV-D-E
40W 2900LM 120-277V

SPIN LIGHTS

ETi PATENTED TECHNOLOGY*



UNDER CABINET LIGHTS

ALL PURPOSE

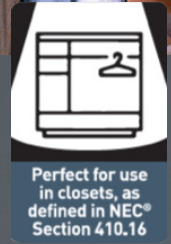


9" Decorative Brushed Nickel Spin Light® with Color Preference®

Color Select: 2700K/3000K/3500K/4000K/5000K CCT



Model # 56558101
Part # SLDC-9IN-810LM-8-CP5-SV-N-BN
11.5W 810LM 120V



Installs in Seconds

Converts bare lamp holder into attractive LED Flushmount!

Speedmount® Accessory

Speedmount® converts your junction box into lamp holder.

SINGLE CCT 4000K

TRADITIONAL STYLE SPIN LIGHT® WITH MOTION SENSOR AVAILABLE IN 7"

7" Spin Light® with Motion Sensor
Model # 54606342
Part # SL-7-83-840-SV-N-OS
11.5W 830LM 120V

TRADITIONAL STYLE SPIN LIGHT® WITH PULL CHAIN CONTROL AVAILABLE IN 7"

7" Spin Light® - Pull Chain
Model # 54484141
Part # SLP-7-83-840-SV-N
11.5W 830LM 120V

5" Spin Light®
Model # 54692142
Part # SL-5-8-840-SV-N
8.5W 600LM 120V

11" Spin Light®
Model # 54652141
Part # SL-11-16-840-SV-N
22W 1600LM 120V

SINGLE CCT 4000K | 3 CCT 3000K, 4000K, 5000K

7" Spin Light®
Model # 54483141
Part # SL-7-83-840-SV-N
11.5W 830LM 120V

7" Color Preference® Spin Light®
Model # 54690112
Part # SL-7-81-802-SV-N
11.5W 810LM 120V



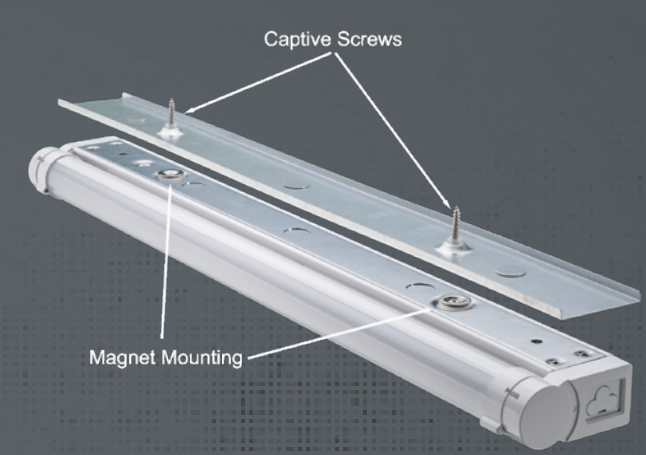
Linkable, Beam Adjustable LED Under Cabinet Light

Dim2Warm™ Under Cabinet Light

Transitions from 3000K to 2200K when dimmed.

MagnaMount™ Installation

MagnaMount™ mounting plate makes cabinet installation quick and easy.



12"
Model # 53502111
Part # UC-12-5-930-SV-D
5.5W 300LM 120V

18"
Model # 53503111
Part # UC-18-9-930-SV-D
9W 500LM 120V

24"
Model # 53504111
Part # UC-24-12-930-SV-D
12.5W 700LM 120V

32"
Model # 53505111
Part # UC-32-10-930-SV-D
15W 1000LM 120V

42"
Model # 53506111
Part # UC-42-15-930-SV-D
22W 1500LM 120V

Direct Wire or Plug in

LINKABLE UNDER CABINET LIGHT WITH STEP DIMMING SWITCH

Single 3000K



12" Linkable Under Cabinet Light
Model # 54196112
Part # UC-12-6-830-SV
6W 350LM 120V



18" Linkable Under Cabinet Light
Model # 54195112
Part # UC-18-8-830-SV
8W 500LM 120V



24" Linkable Under Cabinet Light
Model # 54194112
Part # UC-24-11-830-SV
11W 700LM 120V

Single 5000K



40" Linkable Magnetic Shelf Light
Model # 535091610
Part # UC-40IN-1000LM-9-50K-SV
13W 1000LM 120V

STRIP LIGHTS

ALL PURPOSE



The Most Versatile LED Strip Light Available!

ETi Advantage

- ✓ Future Proofed! Replaceable Light Engine & Driver.
- ✓ Optional motion sensors
- ✓ Tandem and Parallel Mounting Brackets Included
- ✓ Converts to 11,000 Lumen Controllable Warehouse High Bay Fixture
- ✓ Shatterproof
- ✓ PMMA Lens will not Discolor Over Time
- ✓ Industrial Grade Powder Coated Housing
- ✓ Extra Wire Length Included, Plus Quick-Connects for Easy Installation.
- ✓ UL damp location rated

Multiple Ways to Install



VersaStrip™ 2 x 4' Linkable Strip Light 0-10V Dimmable
 Model # 54598142
 Part # ST-4-55-840-MV-D
 100W 11000LM 120-277V
 Case Pack - 1
 Product Dim. 48 x 2.1 x 2.95 in.

8' Strip Lights ships in a 4' Box

8' Tandem Bracket Included



4' Dual Low/High Bay Bracket Included
 Motion Sensor Accessory Included



4' Single Individual or Multiple Grid Layout Using Bracket Accessories

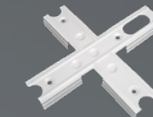
VersaStrip Accessories



Motion Sensor
 Model # 90600647



Plastic Cover
 Model # 90600739



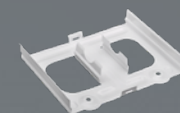
Cross Linking Bracket
 Model # 90600651



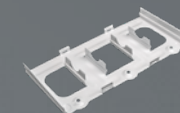
T Linking Bracket
 Model # 90600649



Continuous Linking Bracket
 Model # 90600737



Parallel Linking Bracket
 Model # 90600738



Parallel Linking Bracket
 Model # 90600650



L Linking Bracket
 Model # 90600648



Adjustable Linking Bracket
 Model # 90600652

Only works with 54598142 VersaStrip Light



40W Emergency LED Driver/BBU
 Model # 70114401

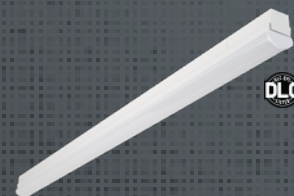


40W Emergency LED Driver/BBU
 Model # 70114402

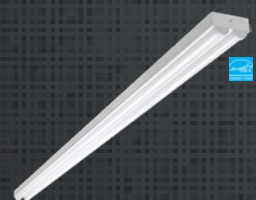
LINKABLE STRIP LIGHTS



2' Linkable Strip Light, Direct Wire or Plug-In
 Model # 54263143
 Part # ST-2-9-840-SV-N
 8.5W 900LM 120V
 Case Pack - 6
 Product Dim. 24 x 1.6 x 2.3 in.



4' Linkable Strip Light, Direct Wire or Plug-In
 Model # 54261143
 Part # ST-4-18-840-SV-N
 17W 1800LM 120V
 Case Pack - 4
 Product Dim. 48 x 1.6 x 2.3 in.

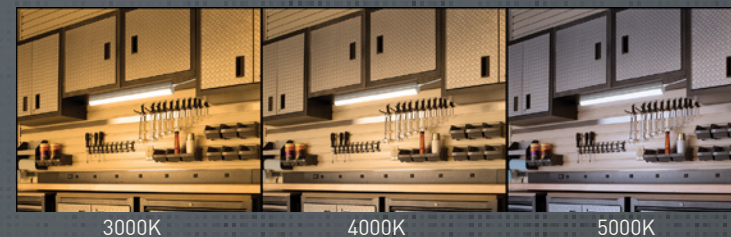


8' Linkable Strip Light (ENERGY STAR®)
 Model # 54599142
 Part # ST-8-90-840-SV-N
 90W 9000LM 120V
 Case Pack - 2
 Product Dim. 95.5 x 4.1 x 2.4 in.



4' Linkable High Lumen Output Strip Light - 0-10V Dimmable
 Model # 54573161
 Part # ST-4-45-850-MV-D
 45W 5000LM 120-277V
 Case Pack - 6
 Product Dim. 48 x 1.8 x 2.2 in.

ECO COLOR PREFERENCE® STRIP LIGHTS



2' ECO Color Preference® Strip Light
 Model # 556081110
 Part # ECOST-2FT-1000LM-8-3CP-SV-TD
 8.5W 1000LM 120V 3000K, 4000K & 5000K
 Case Pack - 6
 Product Dim. 24 x 2.4 x 3.9 in.



4' ECO Color Preference® Strip Light
 Model # 556091110
 Part # ECOST-4FT-2000LM-8-3CP-SV-TD
 17W 2000LM 120V 3000K, 4000K & 5000K
 Case Pack - 4
 Product Dim. 48 x 2.4 x 3.9 in.

NON-LINKABLE STRIP LIGHTS



2' Strip Light, Direct Wire
 Model # 54260144
 Part # ST-2-18-840-MV-N
 17W 1800LM 120-277V
 Case Pack - 6
 Product Dim. 24 x 2.2 x 2.7 in.



4' Strip Light, Direct Wire
 Model # 54283144
 Part # ST-4-36-840-MV-N
 34W 3600LM 120-277V
 Case Pack - 4
 Product Dim. 48 x 2.2 x 2.7 in.

WRAP LIGHT

ARCHITECTURAL DIRECT | INDIRECT



EZ WRAP
INSTALL LIGHT

EZ Install Direct | Indirect Architectural Wrap

3,977 Direct Lumens | 2,725 Indirect Lumens

ETi Advantage

- ✓ Hinged lens and quick wire connectors make for quick and easy installation
- ✓ Perfect for use in classrooms, training centers and offices
- ✓ Continuous row mount (up to 3 fixtures)
- ✓ Suspension mounting chains included
- ✓ UL Damp location rated
- ✓ 0-10V Dimmable



3 Light Switch Controlled Lighting Modes
No Special Wiring Needed



Direct + Indirect Mode
6,702 Lumens

Indirect Only
2,725 Lumens

Direct Mode
3,977LM



Simply toggle wall switch 'ON' & 'OFF' within 3-seconds to change lighting modes.



Choose from several easy to install architectural mounting options



SURFACE MOUNT



PENDANT | STEM MOUNT



SUSPENSION MOUNT

CONTINUOUS ROW MOUNTING

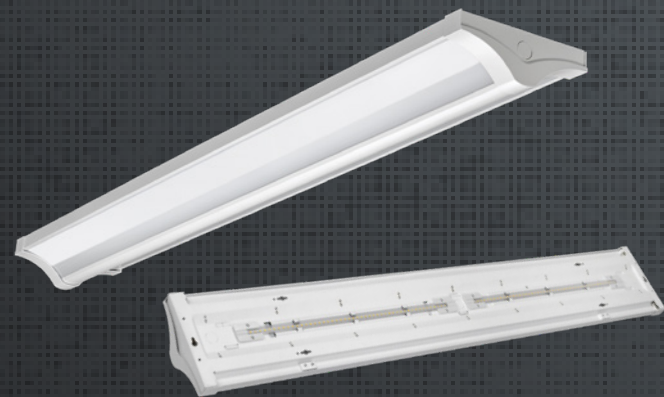


Each Fixture Includes A Continuous Row Bracket

This bracket can be paired with all three primary mounting options (surface, suspension or pendant/stem mount) to create a unique architectural layout and design installation.



WRAP LIGHTS



Direct/Indirect Wrap Light

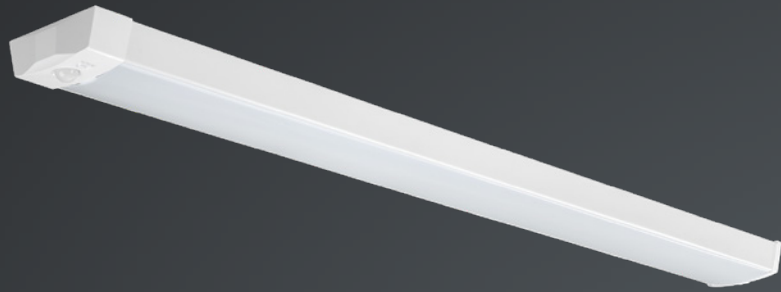
4' High Lumen Output Wrap 0-10V Dimmable
 Model # 56567241
 Part # WR-4FT-6700LM-8-40K-MV-LVD
 58W 6700LM Direct + Indirect, 4000LM Direct, 2700LM Indirect 120-277V
 Case Pack - 2
 Product Dim. 48.09 x 7.35 x 3.03in

DIRECT/INDIRECT WRAP LIGHT ACCESSORIES

Model #	Description	Compatible Model #
Mounting		
95656724101	Pendant/stem mounting kit, 8" stem length	56567241
Occupancy Sensor		
70201101-2	External mount step dimming microwave occupancy sensor	56567241
70205101	OC sensor handheld remote programmer	56567241
Emergency LED Driver/BBU (BBU field installed w/OC sensor or dimming)		
70112202-2	Square, 25W, IP rated, 90 minutes	56567241
70112201-2	Round, 25W, IP rated, 90 minutes	56567241

WRAP LIGHT

ALL PURPOSE & ARCHITECTURAL



4' ECO Wrap Light with OC Sensor

Model # 56513242
Part # WR-4FT-3600LM-8-40K-SV-N
40W 3600LM 120V

Product Dimensions 48 x 5 x 2.17 in.



Three easily adjustable motion sensor settings



LIGHTING CONTROL AND SAFETY



25W Emergency LED Driver/BBU
Model # 70112202



Universal Wattage BBU
Model # 90600143

40W Emergency LED Driver/BBU
Model # 70114402



Step Dimming Motion Sensor,
Microwave with Daylight Sensor
Model # 90600144



WRAP LIGHTS



High Lumen

4' High Lumen Output Wrap 0-10V Dimmable (ENERGY STAR®)

Model # 54677441
Part # WR-4-57-940-MV-D
57W 5200LM 120-277V
Case Pack - 2
Product Dim. 48 x 10 x 3.1 in.



Compact

4' Compact Wrap Light

Model # 56513141
Part # WR-4-36-840-MV
40W 3600LM 120-277V
Case Pack - 6
Product Dim. 48 x 5 x 1.8 in.



Closet Lighting

18" Closet Light with Pull Chain (ENERGY STAR®)

Model # 53603142
Part # CS-18-12-840-SV
16W 1200LM 120V
Case Pack - 2
Product Dim. 18 x 4.3 x 2 in.



2' Wrap

2' Wrap Light - 0-10V Dimmable (ENERGY STAR®)

Model # 54655441
Part # WR-2-20-940-MV-D
20W 1800LM 120-277V
Case Pack - 4
Product Dim. 23.6 x 5.9 x 2.9 in.

4' Wrap

4' Wrap - 0-10V Dimmable

Model # 54676241
Part # WR-4-36-940-MV-D
34W 3600LM 120-277V
Case Pack - 2
Product Dim. 48 x 5.9 x 2.9 in.



4' Wrap with Step Dimming Motion Sensor

Model # 54676241-I
Part # WR-4-36-940-MV-D-OS
34W 3600LM 120-277V
Case Pack - 2
Product Dim. 48 x 5.9 x 2.9 in.



4' Wrap - Battery Back-Up

4' Wrap with Battery Back-Up

Model # 54676341
Part # WR-4-36-940-MV-D-EM
34W 3600LM 120-277V
Case Pack - 2
Product Dim. 48 x 5.9 x 2.9 in.



4' Wrap with Battery Back-Up and Step Dimming Motion Sensor

Model # 54676341-I
Part # WR-4-36-940-MV-D-EM-OS
34W 3600LM 120-277V
Case Pack - 2
Product Dim. 48 x 5.9 x 2.9 in.



WRAP LIGHT ACCESSORIES

Model #	Description	Compatible Model #
Motion Sensor		
90600144	Step Dimming Motion Sensor with Daylight Sensor, Internal	54676241, 54676341, 56514142
Emergency LED Driver/BBU		
70112202	Square, 25W, IP rated, 90 minutes	54655441, 54656241
70114402	Square, 40W, IP rated, 90 minutes	54676142, 54677441, 56513141, 56507113
BBU		
90600143	Universal Wattage BBU	54676341

WRAP LIGHTS

LowPro™ COMMERCIAL & ECO



CEILING & SHOP LIGHTS

ALL PURPOSE



Commercial LowPro Wrap Light

4' Commercial LowPro Wrap Light

Model # 56802142
Part # WR-4FT-5500LM-8-40K-MV-LVD
48W 5500LM 120-277V



ECO LowPro Wrap Light

4' ECO LowPro Wrap Light

Model # 56801142
Part # WR-4FT-3200LM-8-40-SV-TVD
42W 3200LM 120V



TRIAC Dimmable - Residential



Remove Center Basket for Easy Wire Access

ETi Advantage

- ✓ Center basket detaches for easy installation
- ✓ Commercial and ECO models available
- ✓ Low profile surface mounting
- ✓ UL TBD location rated
- ✓ 0-10V Dimmable or TRIAC Dimming models

Reva Stepped and Traditional Lenses Available



1.5' x 4' Reva Stepped Lens
Model # 54649142
Part # CL-14-75-840-SV-D-G
75W 5500LM 120V

1' x 4' Reva Stepped Lens
Model # 54647142
Part # CL-14-40-840-SV-D-G
40W 3000LM 120V

1' x 4' Traditional Lens
Model # 54644142
Part # CL-14-40-840-SV-D-H
40W 3000LM 120V

1.5' x 4' Traditional Lens
Model # 54645142
Part # CL-14-75-840-SV-D-H
75W 5500LM 120V

ETi Advantage

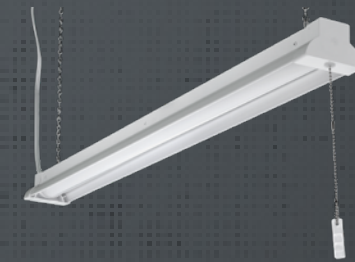
- ✓ High Impact Diffuser Lens
- ✓ Thin Profile
- ✓ TRIAC Dimmable

SHOP LIGHTS



4' Linkable Shop Light

Model # 54103162
Part # SH-4-35-840-SV
36W 3300LM 120V
Suspension Mounting Accessories and Power Linking Cable Included



40" Shop Light
Model # 54590141
Part # SH-40-30-840-SV
30W 2800LM 120V

ETi Advantage

- ✓ Commercial strength material lighting for those tough jobs
- ✓ 4000K CCT 80CRI 120V

External Motion Sensor (90600121)
Compatible with 54103162

FLAT PANELS

WITH COLOR PREFERENCE® & LUMEN BOOST™



ECO Series Flat Panels

ETi's patented Color Preference® Technology allows the installer to select the desired color temperature with the flip of a switch!

ETi Advantage

- ✓ DLC Premium
- ✓ Robust, lightweight construction
- ✓ Non-yellowing, UV-resistant lens
- ✓ Excellent aesthetics at an affordable cost
- ✓ 4 CCT Color Preference® & 4 step Lumen Boost™
- ✓ Even edge to edge light distribution
- ✓ Optional BBU, OC Sensor, or both pre-installed

Installation Benefits

- Compact Recessed Driver box
- Easy Handling
- Ultra thin backlit design
- Easy-to-install replacement for lay-in troffers, baskets, and parabolic fixtures
- Pre-installed BBU Bracket
- Multiple conduit points allows multiple accessory installation options
- Earthquake Clips already installed

EC016 1x4 Flat Panels w/ Lumen Boost and Color Preference®

Model # 64214101
Part # E16FP-14-LB4-8-CP4-MV-LVD-1PK
 20W/25W/30W/35W 2500LM/3125LM/3750LM/4375LM 120-277V
 3000K/3500K/4000K/5000K
 Case Pack - 1

Model # 64214102
Part # E16FP-14-LB4-8-CP4-MV-LVD-2PK
 20W/25W/30W/35W 2500LM/3125LM/3750LM/4375LM 120-277V
 3000K/3500K/4000K/5000K
 Case Pack - 2

EC016 2x2 Flat Panels w/ Lumen Boost and Color Preference®

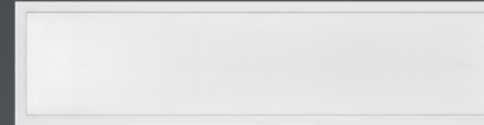
Model # 64222401
Part # E16FP-22-LB4-8-CP4-MV-LVD-1PK
 20W/25W/30W/35W 2500LM/3125LM/3750LM/4375LM 120-277V
 3000K/3500K/4000K/5000K
 Case Pack - 1

Model # 64222402
Part # E16FP-22-LB4-8-CP4-MV-LVD-2PK
 20W/25W/30W/35W 2500LM/3125LM/3750LM/4375LM 120-277V
 3000K/3500K/4000K/5000K
 Case Pack - 2

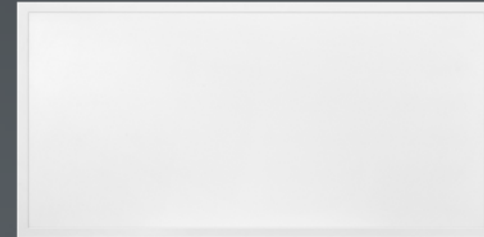
EC016 2x4 Flat Panels w/ Lumen Boost and Color Preference®

Model # 64224301
Part # E16FP-24-LB4-8-CP4-MV-LVD-1PK
 35W/40W/45W/50W 4375LM/5000LM/5625LM/6250LM 120-277V
 3000K/3500K/4000K/5000K
 Case Pack - 1

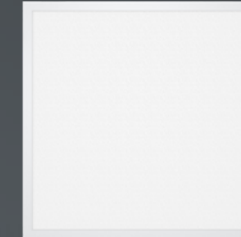
Model # 64224302
Part # E16FP-24-LB4-8-CP4-MV-LVD-2PK
 35W/40W/45W/50W 4375LM/5000LM/5625LM/6250LM 120-277V
 3000K/3500K/4000K/5000K
 Case Pack - 2



EC016 1x4 Flat Panels



EC016 2x4 Flat Panels



EC016 2x2 Flat Panels



PRE-INSTALLED BATTERY BACK UP UNITS, OCCUPANCY SENSOR OR BOTH OPTIONS

2-PACK Configurations (Base Fixture w/ Internal OC Sensor)

EC016 1x4 Flat Panels
Model # 64214102-I
Part # E16FP-14-LB4-8-CP4-MV-LVD-OS-2PK

EC016 2x2 Flat Panels
Model # 64222402-I
Part # E16FP-22-LB4-8-CP4-MV-LVD-OS-2PK

EC016 2x4 Flat Panels
Model # 64224302-I
Part # E16FP-24-LB4-8-CP4-MV-LVD-OS-2PK

2-PACK Configurations (Base Fixture w/ BBU Installed)

EC016 1x4 Flat Panels
Model # 64214102-EM
Part # E16FP-14-LB4-8-CP4-MV-LVD-EM-2PK

EC016 2x2 Flat Panels
Model # 64222402-EM
Part # E16FP-22-LB4-8-CP4-MV-LVD-EM-2PK

EC016 2x4 Flat Panels
Model # 64224302-EM
Part # E16FP-24-LB4-8-CP4-MV-LVD-EM-2PK

2-PACK Configurations (Base Fixture w/ BBU & Internal OC Sensor)

EC016 1x4 Flat Panels
Model # 64214102-I-EM
Part # E16FP-14-LB4-8-CP4-MV-LVD-EMOS-2PK

EC016 2x2 Flat Panels
Model # 64222402-I-EM
Part # E16FP-22-LB4-8-CP4-MV-LVD-EMOS-2PK

EC016 2x4 Flat Panels
Model # 64224302-I-EM
Part # E16FP-24-LB4-8-CP4-MV-LVD-EMOS-2PK



FLAT PANEL ACCESSORIES

Model #	Part #	Description
70317101	SM-KIT-E16FP-22	EC016 2x2 Flat Panel Surface Mount Kit (White)
70317102	SM-KIT-E16FP-24	EC016 2x4 Flat Panel Surface Mount Kit (White)
70317103	SM-KIT-E16FP-14	EC016 1x4 Flat Panel Surface Mount Kit (White)
70317201	SUSP-KIT-2C	2-Cable Suspension Mount Kit (max length 3'-0") for 2x2 & 1x4 panels
70317202	SUSP-KIT-3C	3-Cable Suspension Mount Kit (max length 3'-0") for 2x4 panel
70319201	RDM-KIT-E16FP-22	EC016 2x2 Flat Panel Recessed Drywall Mount Kit (White), 38mm
70319202	RDM-KIT-E16FP-24	EC016 2x4 Flat Panel Recessed Drywall Mount Kit (White), 38mm
70319203	RDM-KIT-E16FP-14	EC016 1x4 Flat Panel Recessed Drywall Mount Kit (White), 38mm
N/A	HD03R	Handheld Remote Programmer for Internal Microwave OC Sensor (compatible w/ EC016 series & 50242162 linear high bay)

LINEAR HIGH BAYS

WITH RAPID SHIP OCCUPANCY SENSORS & BBUs



Linear High Bays



2' Linear High Bay - 0-10V Dimmable DLC Damp Rated Replaces 400W HID

Model # 50240261

Part # HBL-2FT-18000LM-8-50K-MV-LVD

138W 18630LM 120-277V



2' Linear High Bay - 0-10V Dimmable DLC Damp Rated Replaces 250-400W HID

Model # 50240161

Part # HBL-2FT-12000LM-8-50K-MV-LVD

92W 12420LM 120-277V



2.75' Linear High Bay - 0-10V Dimmable DLC Damp Rated Replaces >400W HID

Model # 50241161

Part # HBL-2.75FT-24000LM-8-50K-MV-LVD

180W 24300LM 120-277V

ETi Advantage

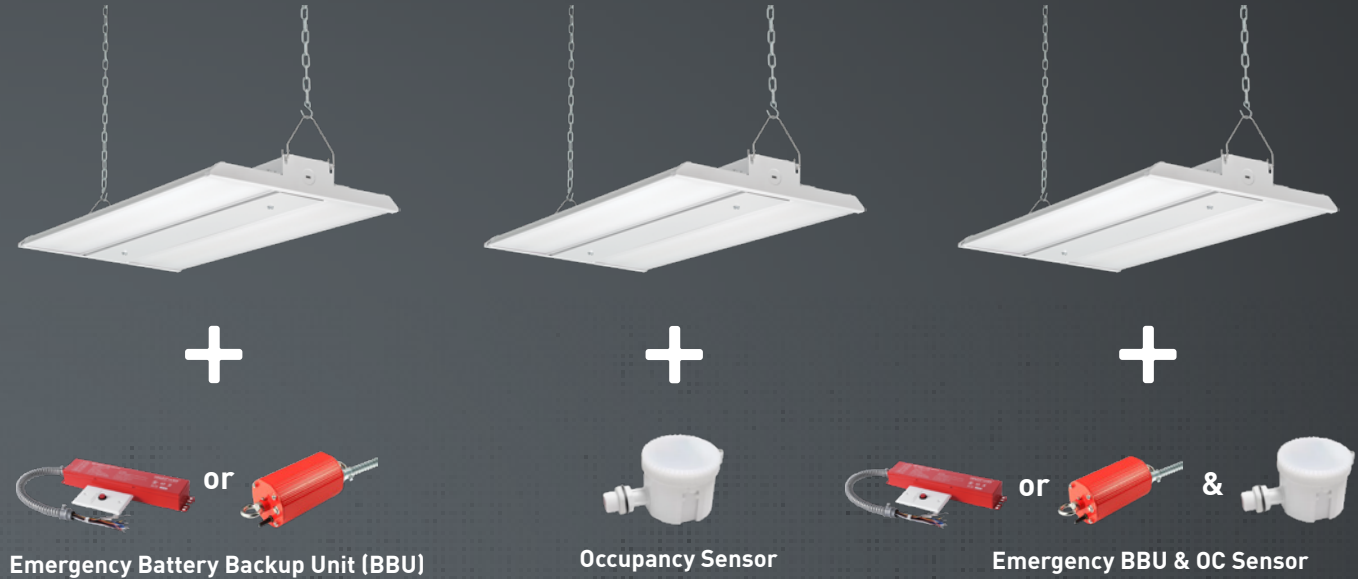
- ✓ EZ Install by suspension, pendant or surface mount – Brackets included
- ✓ Pendant/Flush mount Bracket enables wiring without physically supporting fixture
- ✓ Tandem brackets available for connecting 2 or more HBL fixtures together
- ✓ Shatter resistant PC lens built with low glare diffuser to reduce risk of forklift injuries

Rapid Ship OC Sensor & BBUs Now Available

New Rapid Ship program for our HBL Linear High Bay Series now offers pre-installed BBUs (square or round), occupancy sensors or a combination of both.

Available SKUs typically ship direct from ETi in 2-weeks or less.

*Lead times can be quantity dependent, always contact factory to confirm.



NEW ACCESSORIES AVAILABLE FOR PURCHASE



Surface Mounting Bracket
Model # 95024016101



1/2" Downrod Mount
Model # 95024016103



Tandem Mounting Bracket
Model # 95024016102

RAPID SHIP ACCESSORIES

Model #	Description	Compatible Model #
70201101-2	External mount step-dim microwave OC sensor	50240161, 50240261, 50241161
70205101	OC sensor handheld remote programmer	50240161, 50240261, 50241161
70112202	(G2) Square, 25W, IP rated, 90 minutes	50240161, 50240261, 50241161
70114401	(G2) Round, 40W, IP rated, 90 minutes	50240161, 50240261, 50241161
70112202-2	(G3) Square, 25W, IP rated, 90 minutes	50240161, 50240261, 50241161
70112201-2	(G3) Round, 25W, IP rated, 90 minutes	50240161, 50240261, 50241161
70114402-2	(G3) Square, 40W, IP rated, 90 minutes	50240161, 50240261, 50241161
70114401-2	(G3) Round, 40W, IP rated, 90 minutes	50240161, 50240261, 50241161
70203101	Round BBU handheld test remote	50240161, 50240261, 50241161

LINEAR HIGH BAY ACCESSORIES

Model #	Description	Compatible Model #
70112201-2	25W Battery Back-up	50240161, 50240261, 50241161
70203101	Round BBU Handheld Test Remote	70114401, 70112201
95457326101	Aircraft Cable for Suspension Mounting for Flat Panels, High Bays, Strip Lights, and Vapor Tights (Two 10' pieces)	All Models
95024016101	Surface mount bracket and cover	50240261, 50240161, 50241161
95024016102	Tandem mounting bracket	50240261, 50240161, 50241161
95024016103	1/2" Downrod	50240261, 50240161, 50241161
70114401-2	40W Round Battery Back-up	Strip Lights: 54283144, 54573161, 54583361, 54598142; Round High Bays: 50228661, 50228761, 50228861; Linear High Bays: 50240161, 50240261, 50241161, 50232162; All Vapor Tights; Shop Lights: 54103162, 54590141
70114402-2	40W Square Battery Back-up	Recessed Downlights: 53189111; Flush Mounts: 54614242, 54620313; Ceiling Lights: 54647142, 54644142; Strip Lights: 54283144, 54573161, 54583361, 54598142; Wraps: 54676142, 54677441, 56513141, 56507113; Flat Panels: 64201131, 64200142, 64200162, 64201231; 64204301, 64204302, 64205401, 64205402, 64224202, 64224201; Linear High Bays: 50240161, 50240261, 50241161, 50232162; All Vapor tights; Wall Packs: 53304261, 53307261; Area Light: 53301111, 53301112
70112202-2	25W Square Battery Back-up	Downlights: All Model #s except: 53189111; SMD 6 Twist Fit Disk: 56578111, 56578411, 56578211, 56578311, 56578501, 56578801, 56578611, 56578711; Flushmounts: All Model #s except 54614242, 54620313; Spin Lights: All Model #s; Strip Lights: 54263143, 54261143, 54260144; Wrap Lights: 54655441, 54676241, 54676241-I, 54676341, 54676341-I, 56567241, 56514142, 53603142; Flat Panels: 64222202, 64222201; Under Cabinet Lights: All Model #s; Linear High Bays: 50240161, 50240261, 50241161; Wall Packs: 53305161, 53307361; Security Lights: All Model #s; Outdoor Flush-mounts: 54466101, 54466201; Shorebreaker Lighting: All Model #s

LINEAR HIGH BAYS

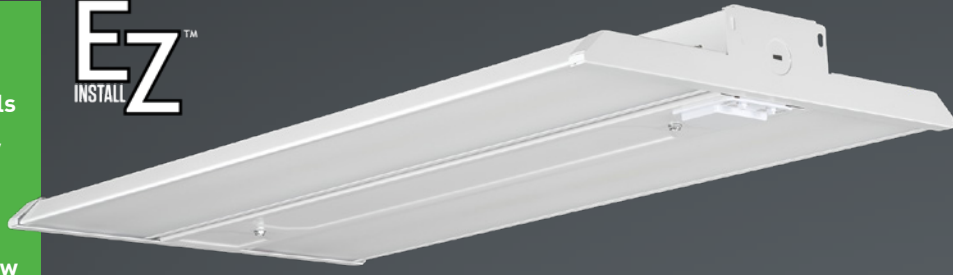
WITH INTEGRAL OC SENSOR



RAPID SHIP PROGRAM

LINEAR HIGH BAY & ECO ROUND HIGH BAY

- ETi Advantage**
- ✓ DLC Premium with integrated controls
 - ✓ Center driver housing allows for easy wiring
 - ✓ Maximum mounting adaptability
 - ✓ Shatter resistant PC lens built with low glare diffuser to reduce risk of forklift injuries



2' Integral OC Sensor Linear High Bay
Model # 50242162
Part # HBL-2FT-18000LM-80-50K-MV-LVD-OS
 138W 18,529LM 120-277V



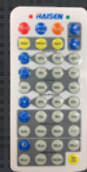
Factory included installation hardware
 Allows for surface, chain/suspension & pendant mount
 (1/2" conduit or 7mm threaded pipe by others)



*Shown With Available For Purchase Tandem Mounting Bracket allowing for double the performance



ACCESSORIES AVAILABLE FOR PURCHASE



OC sensor handheld remote programmer
Model # 70206101



Round 40W Emergency LED Driver/BBU
Model # 70114401-2



(2) 10' Long Air Craft Cables
Model # 95457326101



Tandem Mounting Bracket
Model # 95024016102



Square 40W Emergency LED Driver/BBU
Model # 70114402-2

EZ INSTALL LINEAR HIGH BAY

MODEL # 50240161, 50240261, 50241161

OCCUPANCY SENSOR INSTALLED - RAPID SHIP ORDERING INFORMATION

Catalog Logic/PT#	Model #	Rapid Ship Option	Sensor Model #
HBL-2FT-12000LM-8-50K-MV-LVD-EOS	50240161-I	OC Sensor	70201101-2
HBL-2FT-18000LM-8-50K-MV-LVD-EOS	50240261-I	OC Sensor	70201101-2
HBL-2.75FT-24000LM-8-50K-MV-LVD-EOS	50241161-I	OC Sensor	70201101-2

BATTERY BACKUP UNIT (BBU) INSTALLED - RAPID SHIP ORDERING INFORMATION

Catalog Logic/PT#	Model #	Rapid Ship Option	BBU Model #
HBL-2FT-12000LM-8-50K-MV-LVD-EM-S	50240161-EM-S	BBU Square	70112202-2 (25W)
HBL-2FT-12000LM-8-50K-MV-LVD-EM-R	50240161-EM-R	BBU Round	70112201-2 (25W)
HBL-2FT-18000LM-8-50K-MV-LVD-EM-S	50240261-EM-S	BBU Square	70114402-2 (40W)
HBL-2FT-18000LM-8-50K-MV-LVD-EM-R	50240261-EM-R	BBU Round	70114401-2 (40W)
HBL-2.75FT-24000LM-8-50K-MV-LVD-EM-S	50241161-EM-S	BBU Square	70114402-2 (40W)
HBL-2.75FT-24000LM-8-50K-MV-LVD-EM-R	50241161-EM-R	BBU Round	70114401-2 (40W)

OCCUPANCY SENSOR & BATTERY BACKUP UNIT (BBU) INSTALLED - RAPID SHIP ORDERING INFORMATION

Catalog Logic/PT#	Model #	Rapid Ship Option	Sensor Model #	BBU Model #
HBL-2FT-12000LM-8-50K-MV-LVD-EOS-EM-S	50240161-I-EM-S	OC Sensor & BBU Square	70201101-2	70112202-2 (25W)
HBL-2FT-12000LM-8-50K-MV-LVD-EOS-EM-R	50240161-I-EM-R	OC Sensor & BBU Round	70201101-2	70112201-2 (25W)
HBL-2FT-18000LM-8-50K-MV-LVD-EOS-EM-S	50240261-I-EM-S	OC Sensor & BBU Square	70201101-2	70114402-2 (40W)
HBL-2FT-18000LM-8-50K-MV-LVD-EOS-EM-R	50240261-I-EM-R	OC Sensor & BBU Round	70201101-2	70114401-2 (40W)
HBL-2.75FT-24000LM-8-50K-MV-LVD-EOS-EM-S	50241161-I-EM-S	OC Sensor & BBU Square	70201101-2	70114402-2 (40W)
HBL-2.75FT-24000LM-8-50K-MV-LVD-EOS-EM-R	50241161-I-EM-R	OC Sensor & BBU Round	70201101-2	70114401-2 (40W)

ECO ROUND HIGH BAY

MODEL # 63802161, 63802261, 63803361

OCCUPANCY SENSOR INSTALLED - RAPID SHIP ORDERING INFORMATION

Catalog Logic/PT#	Model #	Rapid Ship Option	Sensor Model #
HB-16200LM-8-50K-MV-LVD-EOS	63802161-I	OC Sensor	70201102-KIT
HB-20250LM-8-50K-MV-LVD-EOS	63802261-I	OC Sensor	70201102-KIT
HB-27000LM-8-50K-MV-LVD-EOS	63803361-I	OC Sensor	70201102-KIT

BATTERY BACKUP UNIT (BBU) INSTALLED - RAPID SHIP ORDERING INFORMATION

Catalog Logic/PT#	Model #	Rapid Ship Option	BBU Model #
HB-16200LM-8-50K-MV-LVD-EM-R25	63802161-EM-R25	BBU Round (25W)	70112201-2-KIT (25W)
HB-20250LM-8-50K-MV-LVD-EM-R25	63802261-EM-R25	BBU Round (25W)	70112201-2-KIT (25W)
HB-27000LM-8-50K-MV-LVD-EM-R25	63803361-EM-R25	BBU Round (25W)	70112201-2-KIT (25W)
HB-16200LM-8-50K-MV-LVD-EM-R40	63802161-EM-R40	BBU Round (40W)	70114401-2-KIT (40W)
HB-20250LM-8-50K-MV-LVD-EM-R40	63802261-EM-R40	BBU Round (40W)	70114401-2-KIT (40W)
HB-27000LM-8-50K-MV-LVD-EM-R40	63803361-EM-R40	BBU Round (40W)	70114401-2-KIT (40W)

OCCUPANCY SENSOR & BATTERY BACKUP UNIT (BBU) INSTALLED - RAPID SHIP ORDERING INFORMATION

Catalog Logic/PT#	Model #	Rapid Ship Option	Sensor Model #	BBU Model #
HB-16200LM-8-50K-MV-LVD-EOS-EM-R25	63802161-I-EM-R25	OC Sensor & BBU Round	70201102-KIT	70112201-2-KIT (25W)
HB-20250LM-8-50K-MV-LVD-EOS-EM-R25	63802261-I-EM-R25	OC Sensor & BBU Round	70201102-KIT	70112201-2-KIT (25W)
HB-27000LM-8-50K-MV-LVD-EOS-EM-R25	63803361-I-EM-R25	OC Sensor & BBU Round	70201102-KIT	70112201-2-KIT (25W)
HB-16200LM-8-50K-MV-LVD-EOS-EM-R40	63802161-I-EM-R40	OC Sensor & BBU Round	70201102-KIT	70114401-2-KIT (40W)
HB-20250LM-8-50K-MV-LVD-EOS-EM-R40	63802261-I-EM-R40	OC Sensor & BBU Round	70201102-KIT	70114401-2-KIT (40W)
HB-27000LM-8-50K-MV-LVD-EOS-EM-R40	63803361-I-EM-R40	OC Sensor & BBU Round	70201102-KIT	70114401-2-KIT (40W)

ROUND HIGH BAYS

ECONOMY ALL PURPOSE



ROUND HIGH BAYS

ADJUSTABLE BEAM HIGH BAY



ECO High Bay

- ETi Advantage**
- ✓ Tempered glass lens is standard with optional wire guard for additional impact resistance
 - ✓ Durable die-cast design w/ pass-through convective heatsink maximizes life & performance
 - ✓ Suited for any project with mounting heights ranging from 10-90ft



*Shown With Available For Purchase Aluminum Reflector and Wire Guard

Adjustable Beam High Bay



Adjustable Beam Round High Bay
 Model # 502501620
 Part # AHB-SEL-22000LM-8-50K-MV-LVD
 176W 22000LM 120-277V 5000K

BEAM ADJUSTABLE
 3 BEAM ANGLES: 60°, 90° & 120°
 POSITION REFLECTOR UP OR DOWN TO ADJUST THE BEAM ANGLE

RETRACT SPRING CLIPS TO SLIDE THE REFLECTOR

ECONOMY ROUND HIGH BAYS



10.2" Eco Round High Bay
 Model # 63802161
 Part # HB-16200LM-8-50K-MV-LVD
 120W 17,651LM 120-277V



10.2" Eco Round High Bay
 Model # 63802261
 Part # HB-20250LM-8-50K-MV-LVD
 150W 22,242LM 120-277V



11.4" Eco Round High Bay
 Model # 63803361
 Part # HB-27000LM-8-50K-MV-LVD
 200W 29,756LM 120-277V

2-WEEK RAPID SHIP PROGRAM



+



Emergency Battery Backup Unit (BBU)



+



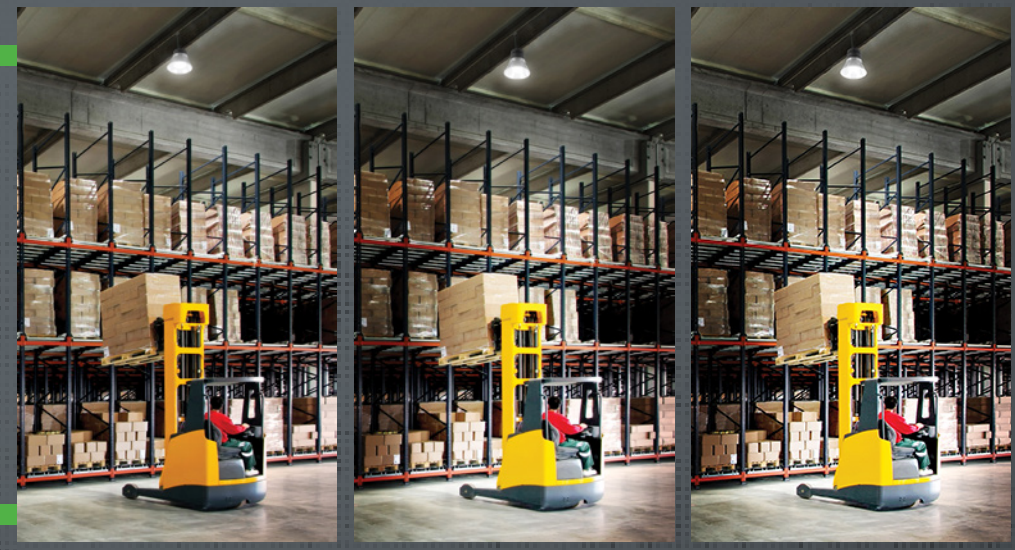
Occupancy Sensor



+



Emergency BBU & OC Sensor



120°

90°

60°

ACCESSORIES AVAILABLE FOR PURCHASE

ACCESSORIES AVAILABLE FOR PURCHASE



Aluminum Reflector
 Model # 70505101



Prismatic Reflector
 Model # 70506101



Yoke & Hook Mount Kit
 Model # 70507101



Wire Guard
 Model # 70509101

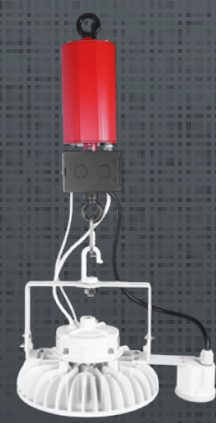


Round 25W Emergency LED Driver/BBU
 Model # 70112201-2-KIT

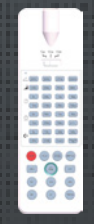
Round 40W Emergency LED Driver/BBU
 Model # 70114401-2-KIT



External Step-Dimming Microwave OC Sensor Kit
 Model # 70201102-KIT



External Step-Dimming Microwave OC Sensor
 Model # 70201102
 Part # MC054V-RC2-A



OC Sensor Remote Programmer to Adjust Factory Settings
 Model # 70205101
 Part # MH10

VAPOR TIGHTS

ALL PURPOSE



SECURITY LIGHTS

OUTDOOR ALL PURPOSE SAFETY, SECURITY & ACCENT



Vapor Tights



- Wide 110° beam angle
- 120-277V
- >80CRI
- 0-10V Dimmable (51W and 56W)
- Temp rating -22°F-113°F
- L70 >50,000
- 5 Year limited warranty



ETi Advantage

- ✓ Durable stainless-steel latches
- ✓ Captive hinged lens makes for quick and EZ Installation
- ✓ Suspended or ceiling mount installation, Brackets included!
- ✓ Replaceable light engines and drivers
- ✓ NSF Rated
- ✓ Upgrade options include integrated microwave motion sensor and BBU (Battery Back-up Unit)

STANDARD LUMEN

Base **4' 34W Vapor Tight (NSF)**
Model # 54656241
Part # VT-4-34-840-MV
34W 3600LM 120-277V

BBU
4' 40W Vapor Tight with Battery Back-up (NSF)
Model # 54656341
Part # VT-4-40-840-MV-EM
40W 3600LM 120-277V



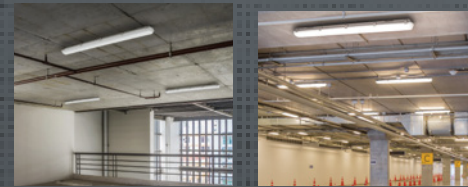
MID LUMEN

Base **4' 51W Vapor Tight - 0-10V Dimmable (NSF)**
Model # 54465141
Part # VT-4-54-840-MV-D
51W 5865LM 120-277V 4000K CCT

Base **4' 51W Vapor Tight - 0-10V Dimmable (NSF)**
Model # 54465161
Part # VT-4-54-850-MV-D
51W 5865LM 120-277V

Motion Sensor
4' 51W Vapor Tight with Motion Sensor - 0-10V Dimmable (NSF)
Model # 54465141-I
Part # VT-4-54-840-MV-D-OS
51W 5865LM 120-277V

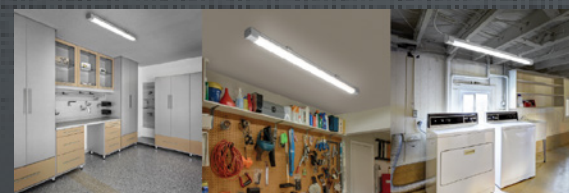
4' 51W Vapor Tight with Motion Sensor - 0-10V Dimmable (NSF)
Model # 54465161-I
Part # VT-4-54-850-MV-D-OS
51W 5865LM 120-277V



VAPOR TIGHT HYBRID

4' Vapor Tight Hybrid
Model # 56574142
Part # VT-4FT-3600LM-8-40K-SV-N
32W 3600LM 120V 4000K CCT

- IP65 Rated
- 120-277V
- >80CRI



OUTDOOR SECURITY LIGHT WITH PHOTOCELL SENSOR



1-Head Security Light with Lumen Boost™ - Bronze
Model # 51404141
Part # SC-14W-1HD-1200LM-40K-SV-BZ
7W/14W 600LM/1200LM 120V



1-Head Security Light with Lumen Boost™ - White
Model # 51404142
Part # SC-14W-1HD-1500LM-8-40K-SV-TD
7W/14W 600LM/1200LM 120V



3-Head Security Light with Lumen Boost™ - Bronze
Model # 51403141
Part # SC-42W-3HD-3600LM-40K-SV-BZ
21W/42W 1200LM/3600LM 120V



3-Head Security Light with Lumen Boost™ - White
Model # 51403142
Part # SC-42W-3HD-3600LM-40K-SV-WT
21W/42W 1200LM/3600LM 120V

MOTION SENSOR SECURITY LIGHT WITH HI/LO BRIGHTNESS SETTING



2-Head Security Light With Color Preference® - Bronze
Model # 51406111
Part # SC-2HD-2400LM-8-CP3-SV-BZ
28W 2400LM 120V



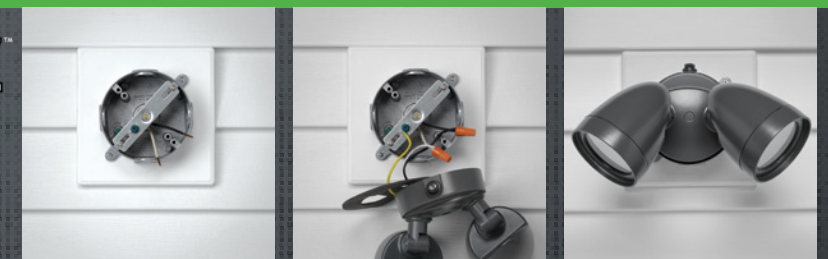
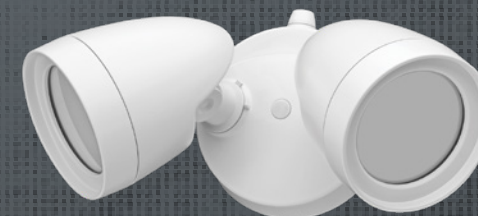
2-Head Security Light With Color Preference® - White
Model # 51406112
Part # SC-2HD-2400LM-8-CP3-SV-WT
28W 2400LM 120V



2 IN 1 AREA/SECURITY LIGHT
Dusk-to-Dawn flood lighting with Hi-Lo motion activated light setting

- Hi-Lo Feature** 50% brightness at dusk, 100% brightness when motion detected
- Area Light** Off or 50% Light Setting, turns on at dusk
- Security Light** Adjustable range and light duration

DUSK-TO-DAWN SECURITY LIGHTS



2-Head Dusk-to-Dawn Security Light - Bronze
Model # 51405143
Part # SC-2HD-2400LM-8-40K-SV-BZ
28W 1200LM/2400LM 120V

2-Head Dusk-to-Dawn Security Light - White
Model # 51405144
Part # SC-2HD-2400LM-8-40K-SV-W
28W 1200LM/2400LM 120V

3-HEAD DUSK-TO-DAWN INSTALLATION WITH MOTION SENSOR



3-Head Security Light with Lumen Boost™ & Color Preference® - Bronze
Model # 514032110
Part # SC-3HD-3600LM-CP3-SV-05-BZ
21W/42W 1800LM/3600LM 120V 3000K/4000K/5000K



3-Head Security Light with Lumen Boost™ & Color Preference® - White
Model # 514032120
Part # SC-3HD-3600LM-CP3-SV-05-WT
21W/42W 1800LM/3600LM 120V 3000K/4000K/5000K

WALL PACKS

OUTDOOR ALL PURPOSE SURFACE & WALL



OUTDOOR LIGHTING

MARINE BULKHEADS & OUTDOOR FLUSHMOUNTS



Traditional



Features & Specifications

Wide 110° beam angle • 120-277V • 80CRI
Temp rating -40°F -113 °F • L70 >50,000 • 5000K CCT

TRADITIONAL WALL PACK, PHOTOCELL COMPATIBLE



18" Wall Pack
Model # 53303161
Part # WP-90-850-MV
90W 10000LM 120-277V



CCT WALL PACK



Color Preference® Wall Pack with Lumen Boost™ and Motion Sensor - Bronze
Model # 53901111
Part # WP-8IN-2350LM-8-CP3-MV-OS-BZ
22W 1175LM/2350LM 120-277V



ETi Advantage

- ✓ Tough die case aluminum constructions
- ✓ Photocell compatible
- ✓ IP65 weather rating
- ✓ Traditional and Full Cut-off models
- ✓ Cut-off Light Shield available for Traditional Wall Pack Series

WALL PACK ACCESSORIES

Model #	Description	Compatible Model #
20170001	Photocell for Wall Pack	53304161, 53303161
70112202	40W Battery Back-up	
90600232	Cut-off Shield for 18" Wall Pack	53303161

Weather Tough Outdoor Lighting



8.5" Round TwistFit Marine Bulkhead with Color Preference®
Model # 504081020
Part # MBRD-8.5IN-8-3CP-MV-WT
7W 917LM 2700K/3000K/4000K 120-277V



8.5" Oval TwistFit Marine Bulkhead with Color Preference®
Model # 504071020
Part # MBOV-8.5IN-8-3CP-MV-WT
7W 870LM 2700K/3000K/4000K 120-277V



9" Rectangular Marine Bulkhead with Color Preference® & Lumen Boost™
Model # 504091120
Part # MBRT-9IN-2LB-8-3CP-MV-WT
5W/11W 600LM/1200LM
3000K/4000K/5000K 120-277V



OUTDOOR FLUSHMOUNTS



Color Preference® Flushmount - Black
Model # 54466101
Part # FME-83-802-MV-N-N-B
12.5W 830LM 120-277V



Color Preference® Flushmount - White
Model # 54466201
Part # FME-83-802-MV-N-N-W
12.5W 830LM 120-277V

BALLAST BYPASS LED GLASS TUBES

DOUBLE END POWER



EZ Install Bypass Ballast Retrofit

Double End Power. T8 & T5 Retrofits up to 150 LPW.

ETi Advantage

- ✓ EZ Install “double end power” design
- ✓ No need to replace shunted sockets
- ✓ Simple ballast bypass rewiring
- ✓ Available in standard and shatter resistant glass
- ✓ Complete linear LED solution 4' T8, 8' T8 and 4' T5 retrofits
- ✓ Ultra low T8 12W LED delivers payback in less than 6 months!
- ✓ Get 15-25% greater energy savings versus typical 14W-16W T8 retrofits
- ✓ 45% lower installation costs* versus single end power Type B retrofits

*(\$8/tube for EZ install vs. \$15/tube for Type B single end)



T8 Power Double End Power Integral Driver Shatter Resistant Glass Tube

No need to replace sockets. Can be used with either shunted or non-shunted sockets.

Never worry about ballasts again!

- Ballasts will fail! Avoid future ballast failures that are often seen after installing Type A (ballast compatible) retrofits lamps
- No “ballast compatibility” issues especially with “multi-lamp per ballast troffers”
- No ballast noise and eliminate ballast power consumption

4' T8
Model # 64101163
Part # T8BP-4-12-850-MV-DE-PET
12W 1800LM 120-277V

4' T8
Model # 64101143
Part # T8BP-4-12-840-MV-DE-PET
12W 1800LM 120-277V

GLASS TUBES

Non shatter resistant

4' T8
Model # 64101461
Part # T8BC-4-15-850-MV
15W 2200LM 5000K Ballast Driven

4' T8
Model # 64101441
Part # T8BC-4-15-840-MV
15W 2200LM 4000K Ballast Driven



T8 DOUBLE END POWER GLASS TUBE



4' T8 Double End Power Integral Driver Glass Tube
Model # 64101141
Part # T8BP-4-12-840-MV-DE
12W 1800LM 120-277V

Model # 64101161
Part # T8BP-4-12-850-MV-DE
12W 1800LM 120-277V

T5 DOUBLE END POWER GLASS TUBE



8' T8 Double End Power Integral Driver Glass Tube
Model # 64102161
Part # T8BP-8-55-850-MV-DE
40W 5500LM 120-277V

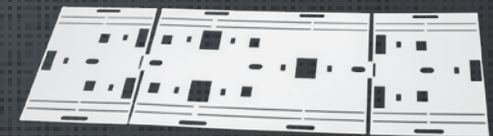
Model # 64105161
Part # T5BP-4-35-850-MV-DE
25W 3500LM 120-277V

LED RETROFIT KIT FOR FLUORESCENT FIXTURES

Retrofit existing 2 lamp 8' fluorescent fixture to four 4' lamp configuration with significantly more efficient T8/T5 linear replacement lamps.



LED Retrofit Kit for Fluorescent Fixtures
Model # 64101162
Part # RK-72-850-MV-DE
48W 7200LM 120-277V



LED TUBE READY FIXTURES



4' Linear 4-Lamp T8 Type B Either End Power High Bay Housing
Model # 70302111
Part # HBH-4-4-T8-E
120-277V

4' Linear 4-Lamp T5 Type B Single End Power High Bay Housing
Model # 70302112
Part # HBH-4-4-T5-S
120-277V

4' Linear 6-Lamp T5 Type B Single End Power High Bay Housing
Model # 70302113-S
Part # HBH-4-6-T5-S
120-277V

EMERGENCY LIGHTING

SAFETY & EGRESS



Available with Remote Compatibility

Emergency Lights
Single Head and Double Head Products

EXIT LIGHTING

SAFETY & EGRESS



**Emergency Light
Exit Sign Combo with
Remote Compatibility**



FEATURES & SPECIFICATIONS

- Battery back-up type - Lithium Ion
- Battery operating time - >90 minutes
- Recharge time - 24 hours
- Temp rating - 32°F -104 °F L70 >50,000
- Warranty - 5 Year limited

Remote Compatibility



**Emergency Light with
Remote Compatibility (2-head)**
Model # 55501201
Part # EM-EL-RC
2.4W 249LM 120-277V

Base Model



Emergency Light (2-head)
Model # 55501101
Part # EM-EL
2.4W 249LM 120-277V

Red Option



Exit Sign
Model # 55301101
Part # EM-EX-R
2.2W 6500K CCT 120-277V

Green Option



Exit Sign Green Letters
Model # 55301102
Part # EM-EX-G
2.2W 6500K CCT 120-277V

Red and Green Combo Option (Bicolor)



Bicolor Exit Sign with Battery Back-Up
Model # 65505101
Part # EM-EX-RG
1W Built in 1.2V 1000mAh Ni-MH battery 120-277V

Single Wet Rated



Emergency Light Fixture Single (Wet Rated)
Model # 55503101
Part # EM-ELR-H1
1.2W 131LM 120-277V

Double Wet Rated



Emergency Light Fixture Double (Wet Rated)
Model # 55503201
Part # EM-ELR-H2
2.4W 263LM 120-277V

Combo



Emergency Light/Exit Sign Combo Red Letters
Model # 55502101
Part # EM-ELC-R
2.4W 263LM 120-277V

Emergency Light/Exit Sign Combo Green Letters
Model # 55502102
Part # EM-ELC-G
2.4W 263LM 120-277V

Combo with Remote Compatibility



**Emergency Light/Exit Sign Combo
with Remote Compatibility**
Model # 55502201
Part # EM-ELC-R-RC
2.4W 263LM 120-277V

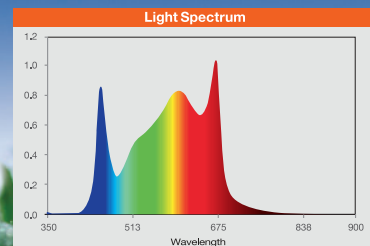
**Emergency Light/Exit Sign Combo
with Remote Compatibility Bicolor**
Model # 65506101
Part # EM-ELC-RG
3.4W 6500K 120-277V

LED HORTICULTURE LIGHTING



At Grow Elite, we design and manufacture our own professional grow lights for large scale and commercial growers.

Our grow lights are built to address quality, yield, the balance between crop costs and profitability.



18" Adjustable LED Under Cabinet Light with Grow Mode 2700K 3000K 4000K Grow Mode



Greenhouse High Output LED Grow Lights

Greenhouse Supplemental & **Open Table** Plant Grow Lighting

- High Output
- Efficient
- Low Maintenance
- Affordable

GH60 600W High Output LED Grow Light



GH30 300W High Output LED Grow Light



Modular High Output LED Grow Lights

Vertical Racking & **Open Table** Plant Grow Lighting

- High Output
- Efficient
- Low Maintenance
- Affordable

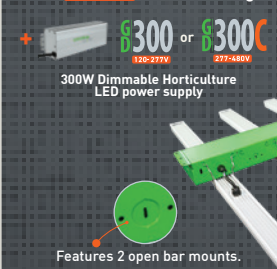
EG60W6 600W Six Bar (100W) LED Grow Light



EG30W6 300W Six Bar (50W) LED Grow Light



EG30W3 300W Three Bar (100W) LED Grow Light



EG15W3 150W Three Bar (50W) LED Grow Light



Modular Grow Light Options

The modular grow light features open bar mounts to easily customize your light recipe



LED Grow Light Controller



- Touch Screen
- 2 Zones. Up to 50 fixtures per zone
- Wall or embedded panel mounting
- Compatible with most LED plant lighting fixtures*

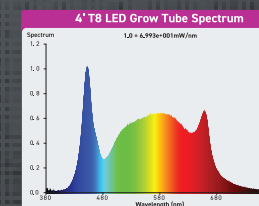
*Compatible with Sink/Source and Sink Only type drivers. Prior to connection, please contact the driver manufacturer to confirm compatibility.

Grow Elite 4' T8 LED Grow Tube

The T8 LED grow tube from Grow Elite feature's a ballast bypass system and can be easily installed into existing T8 lighting fixtures using non-shunted connectors.

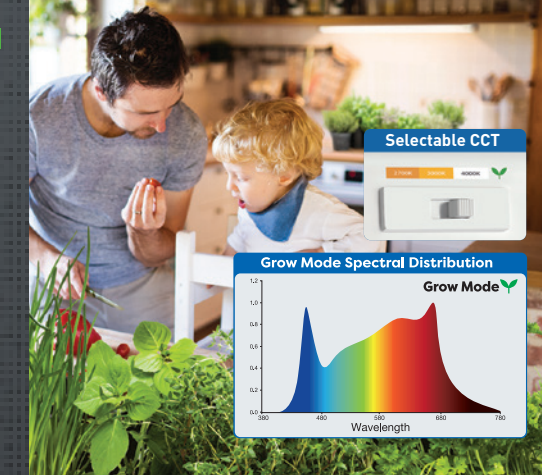
Vertical Racking Plant Grow Lighting

- Full spectrum plant grow lighting
- Easily installs into existing T8 light fixtures
- Improves plant health and yield



18" Adjustable LED Under Cabinet Light with Grow Mode 2700K 3000K 4000K Grow Mode

- Cabinet Surface Mountable
- MAGNA MOUNT™
- Adjustable Beam Angle
- Improves plant health and yield
- Linkable



Model	GH60	GH30	EG60W6	EG30W6	EG30W3	EG15W3
Order#	GEGH-600W-FS	GEGH-300W-FS	GEEG-600W6-FS	GEEG-300W6-FS	GEEG-300W3-FS	GEEG-150W3-FS
Includes	GH60 Light Bar GD600 Driver	GH30 Light Bar GD300 Driver	EG10 Light Bar (6pcs) GD600 Driver	EG5 Light Bar (6pcs) GD300 Driver	EG10 Light Bar (3pcs) GD300 Driver	EG5 Light Bar (3pcs) GD150 Driver
			MS11 Bracket		MS5 Bracket	
	For 277-480V add "-C" to the order number.					

Model	EG100X3	EG50X3	AMP LIGHT BARS	GL22W	18" UNDER CAB
Order#	GEEG-300W3-FS	GEEG-150W3-FS	Summer 2021	GL-22-MV	GL-18IN-500LM-8-CP3-SV-TD
Includes	EG10 Light Bar (3pcs) GD300 Driver	EG5 Light Bar (3pcs) GD150 Driver	AMP Deep Blue AMP Far Red AMP UV	4' T8 LED Grow Light Tube	18" Under Cabinet Light With Grow Mode
	For 277-480V add "-C" to the order number.				

GROW ELITE
LED Horticulture Lighting
Visit www.groweliteled.com
for detailed product information.

ACCESSORIES

OCCUPANCY SENSORS & BATTERY BACK-UP UNITS

OC Sensors



Step Dimming Motion Microwave Sensor

Model # 70201101-2
Part # MC054V-RC2-D
Description: 16m x 15m detection zone, 360° detection angle (ceiling), externally mounted



Multi Volt Occupancy Sensor with Daylight Sensor

Model # 90600121
Description: Externally mounted, up to 19' mounting height, detection angle 30°-150°, knockout or link connection



VersaStrip Motion Sensor

Model # 90600647
Part # OS-ST-01
Description: On/Off OC sensor with adjustable duration level (2 minutes, 5 minutes, or 15 minutes). Only compatible with the VersaStrip light when mounted side-by-side (twin 48" strip lights) using the parallel linking bracket (included with VersaStrip light)



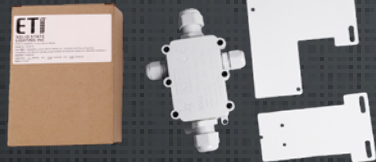
Step Dimming Motion Sensor, Microwave with Daylight Sensor

Model # 90600144
Part # MC601V
Description: Internally mounted, up to 49' mounting height, detection angle 150° (wall), 360° (ceiling)



External Step Dimming Microwave OC Sensor Kit

Model # 70201102-KIT
Part # MC054V-RC2-A-KIT
Description: Externally mounted, up to 49.2 ft mounting height



BBU Accessories



Square BBUs

Model # 70112202 / 70112202-2
Part # EMA25FY-170
Description: 25w Square Battery Back-up, Li-Ion Battery illumination time ≥ 90 minutes @ 25w, recharge time 24 hours, 100-347V, IP65



Square BBUs

Model # 70114402 / 70114402-2
Part # EMA40FY-170
Description: 40w Square Battery Back-up, Li-Ion Battery, illumination time ≥ 180 minutes @ 40w, recharge time 24 hours, 100-347V



Model # 90600143
Part # EMJ-0825
Description: LiFEPO4 Battery, illumination time ≥ 90 minutes @ 25W, recharge time 48 hours max. 120-277V



Round BBUs

Model # 70112201 / 70112201-2
Part # EMUFO-25170-YY
Description: 25w Round Battery Back-up, Li-Ion Battery, illumination time ≥ 90 minutes @ 25w, recharge time 24 hours, 100-347V, IP65



Model # 70114401 / 70114401-2
Part # EMUFO-40170-YY
Description: 40w Round Battery Back-up, Li-Ion Battery, illumination time ≥ 180 minutes @ 40w, recharge time 24 hours, 100-347V, IP65



BBU for Non-Isolated Driver

Model # 70101101
Part # BLD-AM08N
Description: Universal Wattage, Ni-MH Battery illumination time ≥ 90 minutes, recharge time ≥ 24 hours, 120-277VAC



BBU for Isolated Driver

Model # 70101102
Part # BLD-AM08D
Description: Universal Wattage, Ni-MH Battery illumination time ≥ 90 minutes, recharge time ≥ 24 hour, 120-277V

Model # 70111101
Description: 5W Battery Back-up for tubes



ETi Solid State Lighting
720 Northgate Parkway
Wheeling, IL 60090

855-384-7754 | www.ETiSSL.com