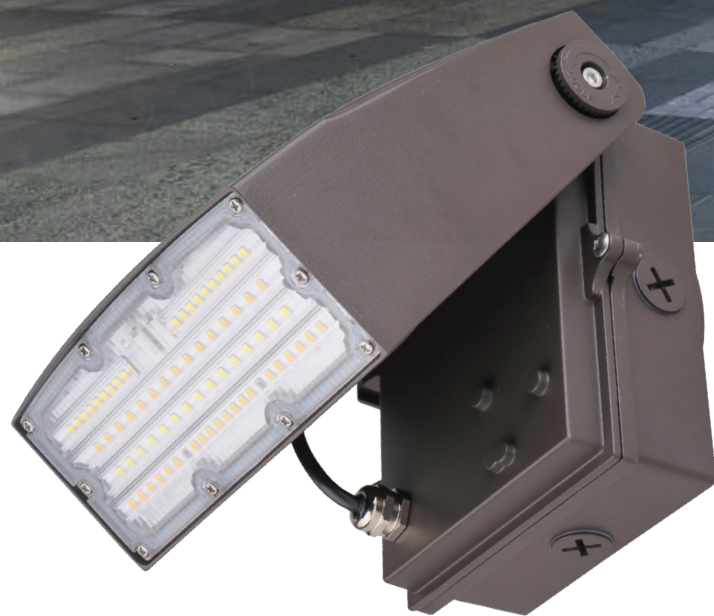




## PRODUCT OVERVIEW

ETi SSL's VersaPak adjustable wall packs offer a modern full cut-off design with 3 Selectable Wattages and 3 Selectable CCTs. With a tilting head that's **adjustable between 0-90 degrees**, VersaPak puts light where it's needed most.

Equipped with 0-10V dimming, universal 120-277 voltage, and a Dusk-to-Dawn Photocell, they are ideal for building entrances, loading docks, walkways and storage facilities.

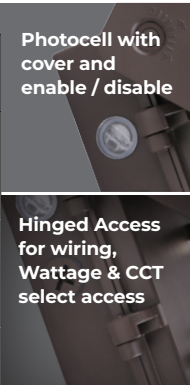


INNOVATE. ILLUMINATE. INSPIRE.

Scan code  
for more  
information



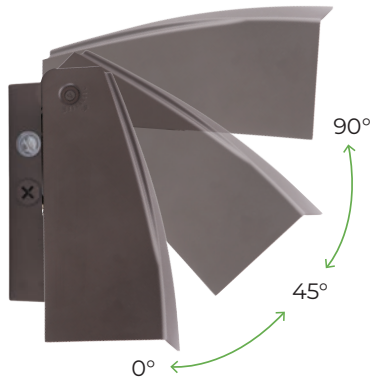
PERFORMANCE SUMMARY				
Lumen Packages	Lumen Pkg. Range (LB3)	Select. Watt. Levels	CCT (CP3)	Distribution Plot
Lumen Pkg 1	1900 – 4050	15   20   30	3000K 4000K 5000K	<div>TYPE II</div>
Lumen Pkg 2	3900 – 6750	30   40   50	3000K 4000K 5000K	
Lumen Pkg 3	6600 – 10800	50   65   80	3000K 4000K 5000K	



ELECTRICAL DATA	
Operation: 120-277V 50/60Hz	
Low Temp Start / Max Temp: -40° C (-40 F) / 50° C= (122° F)	
Controls: 0-10V, Photocell Dusk-to-Dawn	
Surge Protection: Pkg 1: 2.5kV, Pkg 2: 4kV, Pkg 3: LIN-PE: 2kV, L-N: 6kV	
CERTIFICATIONS & OTHER INFO	
Warranty: 5 year	
UL/cUL Listed: Wet location, IP65 Rated	



**Dark Sky Compatible\***  
 VersaPak can be utilized in dark sky compliant plans when kept at 0° and set to 3000K.



**Adjustable Head for Fine-Tuned Distribution**  
 VersaPak has an adjustable head that can pivot from 0° to 90°