

PRODUCT OVERVIEW

ETi SSL's **Fire-Rated Downlights** withstand temperatures **up to 1100° for up to two hours**, offering a time/cost-saving solution to the issue of compromised fire integrity for recessed downlight installations. Fire-rated downlights can significantly decrease the time it takes for fires to spread, helping limit overall damage. They also eliminate the need for additional fire-rated boxes to shroud the light fixtures.

These 5-CCT selectable, low-profile downlights have a .04" surface profile, giving them a sleek, modern look. With a 90+ CRI and wet-location rating, they are ideal for new or retrofit construction projects for multifamily, assisted living facilities, and more.



INNOVATE. ILLUMINATE. INSPIRE.

FIRE-RATED CANLESS DOWNLIGHTS | 5 CCT COLOR PREFERENCE®

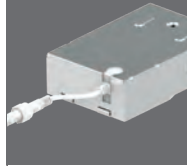
Scan code
for more
information



PERFORMANCE SUMMARY

Size (dia.)	Lumen Pkg.	Wattage	CCT (CPS)	Dist. Plot
3"	500	6.5	2700K 3000K 3500K 4000K 5000K	
4"	800	10		
6"	1200	14		
8"	1600	19		

Included J-Box
with 15 3/8" FT4 listed cable



ELECTRICAL DATA

Operation: 120V/60Hz

Operating Temperature: -20°C (-4°F) / 40°C (104°F)

Controls: Triac dimming, down to 10%

Quick wire connectors are included

CERTIFICATIONS & OTHER INFO

Warranty: 5 year

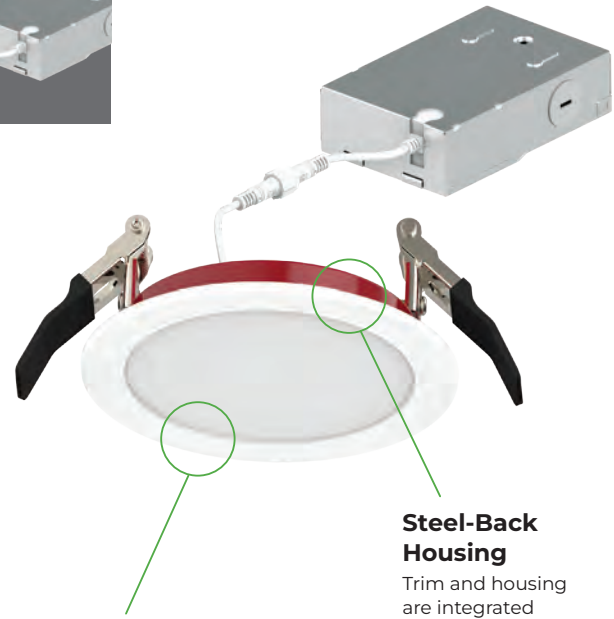
2-Hr. Fire Rating | Tested to comply w/ UL 263/ASTM E119/CAN-ULC-S101-07

cUS ETL Rated, Wet Location, Air Tight Certified

TAA Compliant

ENERGY STAR® rated & JA8 Title 24 Compliant

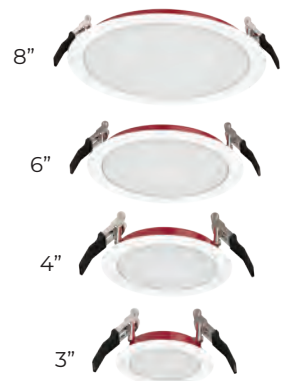
IC Rated for direct contact with insulation



EXTREMELY FIRE RESISTANT
Up to 1100°C for up to 2 Hours
Helps reduce flame speed



Available Sizes



ACCESSORIES

(order separately)



Rough-in Guide Plates
for New Construction
(available for sizes 3", 4" and 6")



12 ft. and 20 ft.
Extension Cables