

VLB | 24" LED VANITY LIGHT BARS

5 CCT COLOR PREFERENCE®
120-277V | Non-Dimmable

KEY FEATURES

- Modern sleek design can be mounted vertically or horizontally
- 5 field adjustable CCTs (2700K/3000K/3500K/4000K/5000K)
- 80+ CRI
- > 54,000 hour life

SPECIFICATIONS

Construction

- Contemporary sleek design
- Cold rolled steel fixture
- 3 Finish Options: Chrome, Brushed Nickel and Matte Black

Optics

- Polycarbonate diffused lens for zero pixelation and overall visual comfort
- Uniform, even light distribution

Installation and Function

- Direct wire mount—vertical or horizontal
- Field select one of five CCTs at installation with an integral switch located on fixture. Factory set to 3000K.

Electrical

- 54,000 hour LEDs at L70 for reduced maintenance
- Operates at 120-277V, 50/60Hz
- Operating temperature: -4°F ~ 113°F
- Non-Dimmable
- ETi SSL's patented 5 CCT COLOR PREFERENCE® allowing for easy field-adjustable color temperature selection with switch located on product

Warranty

5-Year Standard Warranty. See terms at: ETISSL.com/warranty/

DATE:	PROJECT:
TYPE:	NOTES:
CATALOG #:	



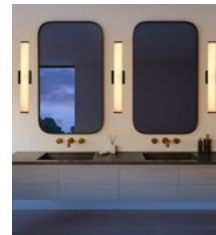
Chrome



Brushed Nickel



Matte Black



Vertical Mount



Horizontal Mount

KEY DATA	
Lumen Range	1652 – 1745
Wattage Range	18 – 19
Efficacy Range (LPW)	87-95
Reported Life (Hours)	L70 / > 54,000



Certifications & Test Data

- All luminaires are built to UL standards and have the appropriate UL labels and information on product
- Damp location rated
- ENERGY STAR®
- Driver rated for FCC part 15 Class B for use in residential or commercial applications



24" LED Vanity Light Bars 5 CCT COLOR PREFERENCE® | 120-277V | NON-DIMMABLE

CATALOG LOGIC

VLB - **13IN** - **800LM** - **8** - **CP3** - **MV** - **N** - **Finish**

Series: **VLB** Vanity Light Bar
 Size: **24IN**
 Lumens (Lumen Package): **1650LM**
 CRI: **8** 80CRI (min.)
 CCT: **CP5** 5 CCT Color Preference® 2700/3000/3500K/4000/5000K
 Voltage: **MV** Multi-Volt 120-277V
 Dimming: **N** Non-Dim
 Finish: **CH** Chrome, **BN** Brushed Nickel, **MB** Matte Black

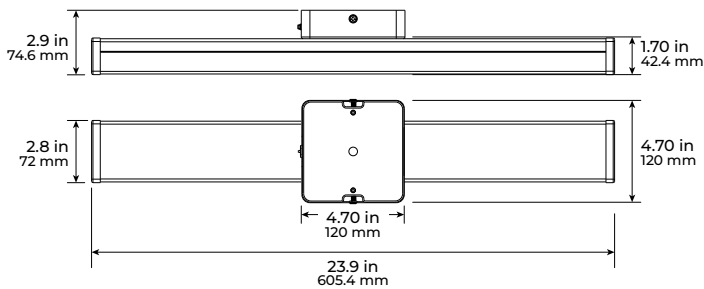
Notes:
 1. Factory set at 3000K. Installing contractor responsible for ensuring desired CCT is selected during installation.

STOCK ORDERING INFORMATION

Catalog Part Number	Order #	Product Description	Case QTY	Wattage (Nominal)	Lumen Pkg	Delivered Lumens ¹	Efficacy (LPW)	CCT	CRI	Volt.	Dim	ENERGY STAR®
VLB-24IN-1650LM-8-CP5-MV-N-CH	537989041	24" Vanity Light Bar with chrome finish	2	17	1650	1652	87	2700K	80+	120-277V	Non-Dim	Search: 537989XXX
						1703	93	3000K				
						1738	95	3500K				
						1745	93	4000K				
						1737	90	5000K				
VLB-24IN-1650LM-8-CP5-MV-N-BN	537989051	24" Vanity Light Bar with brushed nickel finish	2	17	1650	1652	87	2700K	80+	120-277V	Non-Dim	Search: 537989XXX
						1703	93	3000K				
						1738	95	3500K				
						1745	93	4000K				
						1737	90	5000K				
VLB-24IN-1650LM-8-CP5-MV-N-MB	537989061	24" Vanity Light Bar with matte black finish	2	17	1650	1652	87	2700K	80+	120-277V	Non-Dim	Search: 537989XXX
						1703	93	3000K				
						1738	95	3500K				
						1745	93	4000K				
						1737	90	5000K				

Notes: 1. For more delivered lumens and test data see on page 3, or visit ETISSL.com

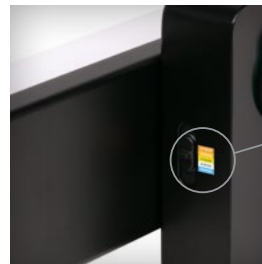
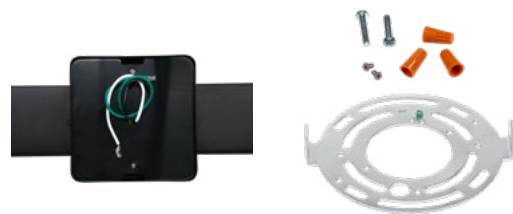
DIMENSIONS / DETAILS



Unit Weight
1.96 lbs.

MOUNTING (Included)

Direct Wire Surface Mount included



5 Selectable CCTs
Factory Set to 3000K

PERFORMANCE / Data

Lumen Maintenance

Ambient Temp.	TM-21 Lumen Maintenance (54,000 hours)
25° C (77° F)	> 84.41%
Ambient Temp.	TM-21 Theoretical L70 (hours)
25° C (77° F)	> 54,000

Load Information

Power Factor	>.90
THD	< 20%
Frequency	50/60 Hz
Low Temp Start / Max Temp	-20° C (-4° F) / 45° C (113° F)

PHOTOMETRIC SAMPLE

Luminaire Data: at 4000K

CCT & CRI	4000K, 80+ CRI
Delivered Lumens	1745
Wattage	18.7W
Efficacy	93

Photometric values based on tests performed in compliance with LM-63 & LM-79

