



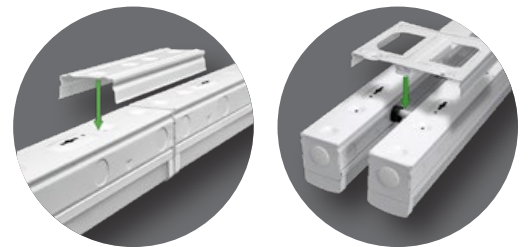
### PRODUCT OVERVIEW

ETi SSL's VersaStrip Lights can be installed in a wide array of configurations. **Link up to (8) 4' strips together to provide excellent light coverage for large areas in multiple configurations.**

Create a more unique environment with the optional "T", "L", "X", Parallel or Adjustable brackets (each are sold separately). **These versatile luminaires** are ideal for garages, repair shops, store aisles, open concept offices, warehouse aisles, showrooms and more.



*Continuous and Tandem Linking brackets Included*



## VersaStrip

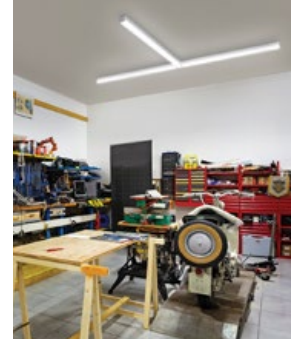
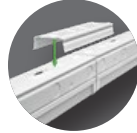


INNOVATE. ILLUMINATE. INSPIRE.

**PERFORMANCE SUMMARY**

Size	Lumen Pkg.	Wattage	CCT	Candela Plot
4'	11000	97	4000K	

Surface and Suspension Mounting Kits Included



**ELECTRICAL DATA**

Operation: 120-277V — 50/60 Hz  
 Operating Temperature: -4°F to 113°F (-20°C to 45°C)  
 Controls: 0-10V Dimming, Occupancy and Daylight Sensors  
 Quick wire connectors are included

**CERTIFICATIONS & OTHER INFO**

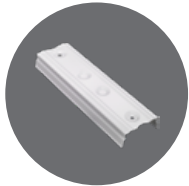
Warranty: 5 year  
 cULus Listed, Damp Location  
 DLC Listed

Continuous and Tandem Linking brackets Included

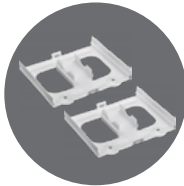


**INCLUDED BRACKETS**

(order separately)



Continuous Linking Bracket



2 Parallel Linking Brackets



2 Plastic Covers

**ADJUSTABLE ANGLE FROM 0° TO 90°**



**BRACKET ACCESSORIES**

(order separately)



Adjustable Linking Bracket



L Linking Bracket



T Linking Bracket



Parallel Linking Bracket 3 Fixtures



Cross Linking Bracket

**OC SENSOR ACCESSORIES**

(order separately)

Motion Sensor, Parallel (Twin Strip Configuration)

Multi-Volt Occupancy Sensor with Daylight Sensor