

DATE:	PROJECT:
TYPE:	NOTES:
CATALOG #:	

## SL | 7" SPIN LIGHT FLUSH MOUNT

WITH PIR OC SENSOR | 3 CCT COLOR PREFERENCE®

### KEY FEATURES

- Luminaire uses ETI's patented Color Preference® with 3 Selectable CCTs (3000K, 4000K, 5000K)
- This patented SpinLight® converts a bare lamp holder into a high-performing, energy-efficient, LED flush mount ceiling light
- Integrated PIR motion sensor with 3 hold times: 2 min. | 5 min. | 15 min. (Control using switch on luminaire), Maximum sensing angle: 100°
- SPEEDMOUNT® Kit included
- Damp Location Rated

### SPECIFICATIONS

#### Construction

- PC Housing with Acrylic Shade
- E26 Medium Base

#### Optics

- High impact, acrylic shade for zero pixelation and overall visual comfort
- Uniform, even light distribution

#### Installation

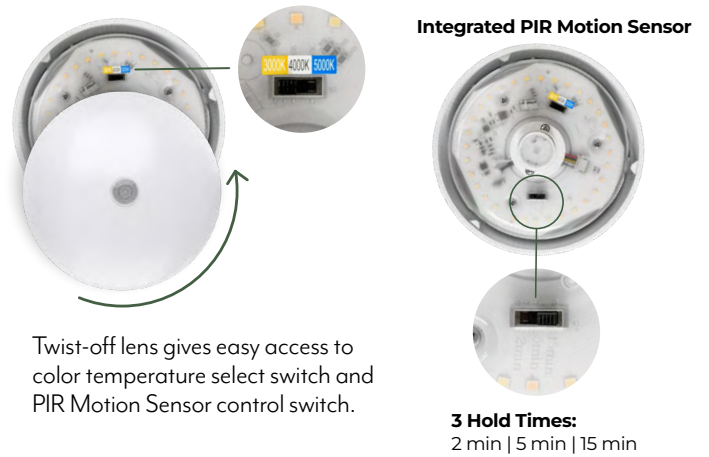
- Twists into most E26 medium based socket/lamp holder (integrated E26 base)
- Also includes a SPEEDMOUNT® Kit for remodel and new construction installations—converts a junction box into a lamp holder
- Field select CCT using integral switch behind the lens prior to installation. Ships at 3000K

#### Electrical

- > 160,000 hour LEDs at L70 for reduced maintenance
- Operates at 120V, 60Hz
- Non-Dimmable
- Operating Temperature: -4°F to 104°F (-20°C to 40°C)
- ETI's patented selectable CCT COLOR PREFERENCE® allows for easy field-adjustable color temperature selection with switch located inside fixture.
- Motion Sensor – 3 hold times settings: 2 min. | 5 min. | 15 min. Switch located on back of fixture

#### Warranty

5-Year Standard Warranty. See terms at: [ETISSL.com/warranty/](https://www.ETISSL.com/warranty/)



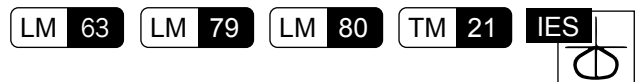
Twist-off lens gives easy access to color temperature select switch and PIR Motion Sensor control switch.



KEY DATA	
LUMEN RANGE	843 – 901
WATTAGE RANGE	10.17 – 10.25
EFFICACY RANGE (LPW)	83 – 90
REPORTED LIFE (HOURS)	L70 / > 160,000

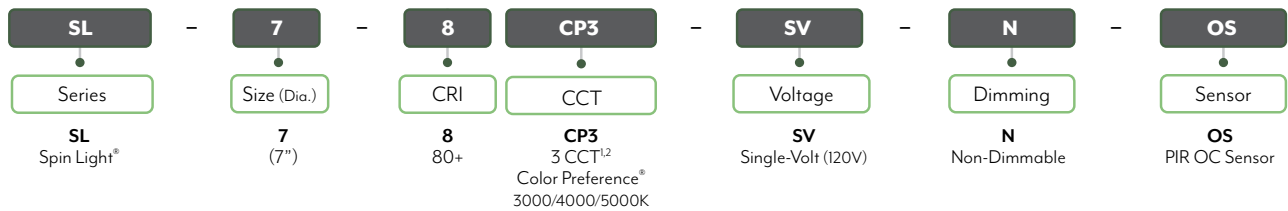
#### Certifications & Test Data

- All luminaires are ETL Listed (US, C) for Damp Location
- Adheres to LM63, LM79, LM80 and TM21 industry standards for photometric, lumen maintenance and lifetime calculations
- Suitable for use in closets when installed in accordance to NEC Section 410.16 (A)(1) and 410.16 (C)(1)



# SL | 7" SPIN LIGHT FLUSH MOUNT WITH PIR OC SENSOR | 3 CCT COLOR PREFERENCE®

## CATALOG LOGIC



Notes:

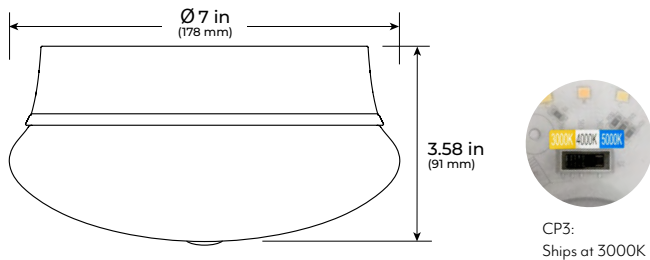
1. Ships at lowest CCT. Installing contractor responsible for ensuring desired CCT selected during installation.

## STOCK ORDERING INFORMATION

CATALOG PART NUMBER	ORDER NUMBER	DESCRIPTION	CASE QTY	CRI	CCT	WATTS (NOM.)	LUMEN PKG. <sup>1</sup>	DELIVERED LUMENS	LPW	VOLTAGE	DIMMABILITY
SL-7-8CP3-SV-N-OS	C02001402A	7" Spin Light® Flush Mount with PIR Motion Sensor	5	80+	3000K	10.5	830	871	85	120V	Non-Dimmable
					4000K	10.5	830	901	90		
					5000K	10.5	830	843	83		

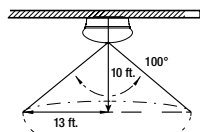
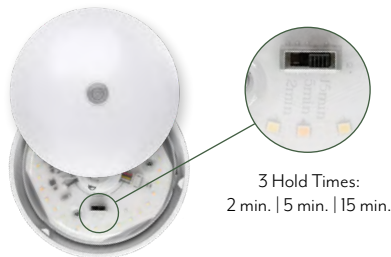
Notes: 1. For more delivered lumens and test data see below, or visit ETISSL.com

## DIMENSIONS / DETAILS



**Unit Weight**  
0.8 lbs.

## MOTION FUNCTION



Detects Motion up to 13' away at up to a 10' mounting height  
Maximum Sensing Angle: 100°

## MOUNTING (Included)

# SpinLight®

QUICK AND EASY INSTALLATION



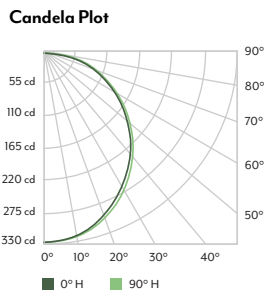
Easily twists into existing lamp holder, just like a light bulb



## PHOTOMETRIC SAMPLE

**Luminaire Data:** at 4000K

CCT & CRI	4000K, 90+ CRI
DELIVERED LUMENS	901
WATTAGE	10.2 W
EFFICACY	90
BEAM ANGLE	50% = 123.8° 10% = 86.5°
SPACING	0° = 1.35 90° = 1.30



Photometric values based on tests performed in compliance with LM-63 & LM-79

## PERFORMANCE / Data

### Lumen Maintenance

Ambient Temp.	TM-21 Lumen Maintenance (54,000 hours)
25° C (77° F)	> 89%
Ambient Temp.	TM-21 Theoretical L70 (hours)
25° C (77° F)	> 160,000

### Load Information

<b>Power Factor</b>	> 0.90
<b>THD</b>	< 20%
<b>Frequency</b>	60 Hz
<b>Low Temp Start / Max Temp</b>	-20° C (-4° F) / 40° C (104° F)