



## PRODUCT OVERVIEW

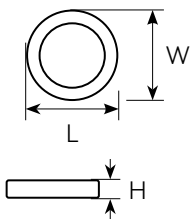
With intricate black trim and soft, diffused light quality, ETI Lighting's Astoria Flush Mount will add class to any residential space. This integrated LED light has **3 Color Preference®** field-selectable CCT options and a soft, comfortable light quality. It's 80+CRI and has an L70 projection to 50,000 hours.

Integrated LED with diffused lens

Long Life: > 50,000 hours (L70)

3 CCT: 3000K, 4000K, 5000K | CRI: 80+

-4°F to 104°F (-20°C to 40°C)



Model #	Description	Energy/Performance		Dimensions/Weights			
		Watts	Lumens	L	W	H	weight (lbs)
CO1174401A	15" Astoria	30	2000	15.0"	15.0"	4.2"	2.3



Easy access to color temperature select switch underneath the twist-off lens



Mounting screws and wire connectors included.

Series	Size (Dia.)	CRI	CCT	Voltage	Dim.	Finish
ASFM Astoria Flush Mount	15 (15")	8 80+ CRI	CP3 <sup>2</sup> 3 CCT	SV 120V	TD TRIAC Dimming	BL Black Finish

