



PRODUCT OVERVIEW

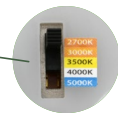
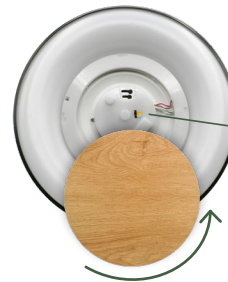
ETI Lighting's KOA Series Flush Mounts has a matte black finish and oak accent to complement natural woods and other décor. Available in drum and tapered styles, these integrated LED lights have **5 Color Preference®** field-selectable CCT plus a 2000K night light feature. They are 80+CRI and have an L70 projection over 50,000 hours.

Integrated LED with diffused lens

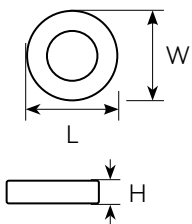
Long Life: > 50,000 hours (L70)

5 CCT: 2700K, 3000K, 3500K, 4000K, 5000K, Night Light: 2000K | CRI: 80+

-4°F to 104°F (-20°C to 40°C)



Easy access to color temperature select switch underneath the twist-off wooden panel.



Model #	Description	Energy/Performance		Dimensions/Weights			
		Watts	Lumens	L	W	H	weight (lbs)
CO117630IA	14" Drum Style	20	1400	13.8"	13.8"	2.4"	2.7
CO117730IA	14" Tapered Style	20	1400	14.1"	14.1"	2.5"	1.7

Series	Size (Dia.)	CRI	CCT	Voltage	Dim.	Finish
KOFM KOA Flush Mount	14 (14") 14T (14" Tapered)	8 80+ CRI	CP5NL 5 CCT with Night Light	SV 120V	TD TRIAC Dimming	BL Black Finish



Mounting screws and wire connectors included.

