



PRODUCT OVERVIEW

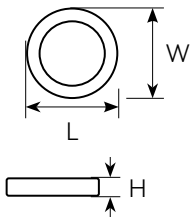
ETI Lighting's Pivot Series Flush Mounts feature a modern, timeless design and flexibility for a variety of residential spaces. These integrated LED lights have **3 Color Preference®** field-selectable CCT options and a soft, comfortable light quality. They are 80+CRI and have an L70 projection to 50,000 hours.

Integrated LED with diffused lens

Long Life: > 50,000 hours (L70)

3 CCT: 3000K, 4000K, 5000K | CRI: 80+

-4°F to 104°F (-20°C to 40°C)

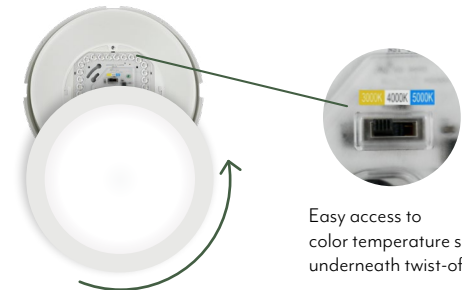


Model #	Description	Energy/Performance		Dimensions/Weights			
		Watts	Lumens	L	W	H	weight (lbs)
CO1168401A	11" Pivot	14	1100	11.0"	11.0"	1.6"	1.19
CO1169401A	13" Pivot	22	1800	13.0"	13.0"	1.8"	1.76
CO1170401A	15" Pivot	30	2400	15.2"	15.2"	1.9"	2.38

Series	Length	CRI	CCT	Voltage	Dim.	Finish
PVFM Pivot Flush Mount	11 (11") 13 (13") 15 (15")	8 80+ CRI	CP3 ² 3 CCT	SV 120V	TD TRIAC Dimming	WH White Finish



Mounting screws and wire connectors included.



Easy access to color temperature select switch underneath twist-off lens

