



## PRODUCT OVERVIEW

ETI Lighting's Nexus Under Cabinet Lights with adaptable Clip Fit Mounting Clips for wall or surface mount. These integrated LED lights have **5 Color Preference®** field-selectable CCT. They are 80+CRI and last 50,000 hour. Great for residential counter areas, kitchens, laundry rooms, and more. Also can be used for indirect light on top of cabinets.

Integrated LED with diffused lens

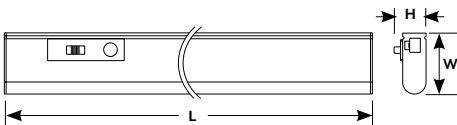
Long Life: >50,000 hours (L70)

5 CCT: 2700K, 3000K, 3500K, 4000K, 5000K | CRI: 80+

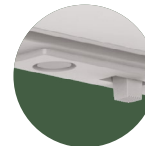
-4°F and +104°F (-20° C and +40° C).

Model #	Description	Energy/Light		Dimensions/Weights			
		Watts	Lumens	L	W	H	weight (lbs)
BO4015301A	12" w/100% & 50% Power Level	6/3	500/200	12.0"	2.0"	1.1"	0.25 lb.
BO4016301A	18" w/100% & 50% Power Level	11/5.5	750/500	18.0"	2.0"	1.1"	0.33 lb.
BO4018301A	24" w/100% & 50% Power Level	14/7	1000/500	24.0"	2.0"	1.1"	0.40 lb.

Series	Width	CRI	CCT	Voltage	Dimming
<b>NXUC</b> Nexus Under Cabinet Lights	<b>12</b> (12") <b>18</b> (18") <b>24</b> (24")	<b>8</b> 80+ CRI	<b>CP5</b> 5 CCT <sup>1</sup> Color Preference® 2700/3000/3500/4000/5000K	<b>SV</b> 120V	<b>TD</b> TRIAC



Linking Cable, Power Cord & Mounting Hardware Included



Easy access to color temperature switch and on/off + brightness level control button on fixture



Adaptable Clip Fit Mounting Clips allow for wall or surface mount

